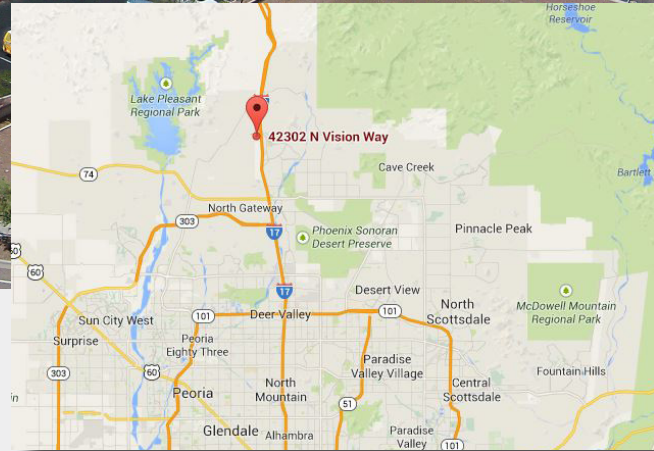


# 42302 N Vision Way

Anthem, Arizona 85086

For Lease  
Office &  
Warehouse Suites



## Property Features

- Flexible suite sizes
- Monument signage available
- Fully sprinklered
- 10' Ceilings in Offices & 16' Ceilings in Warehouse
- SW of SWC of I-10 & Anthem Way
- Located in heart of Anthem Commercial District
- Professional appearance
- Tenants include respected national and local businesses
- Attractively landscaped

BUILDING SIZE	±38,780 SF
AVAILABLE SIZES	±2,330 SF - ±5,400 SF
YEAR BUILT	2003
ZONING	CP/GCP
PARKING	2.1/1,000 (76 spaces)

For Lease: \$0.70-\$1.00/SF/month, NNN

### Rick Foss

+1 602 393 6658 • rick.foss@naihazizon.com

### Jay Olson

+1 602 393 6613 • jay.olson@naihazizon.com

ALL INFORMATION FURNISHED REGARDING PROPERTY FOR SALE, RENTAL OR FINANCING IS FROM SOURCES DEEMED RELIABLE, BUT NO WARRANTY OR REPRESENTATION IS MADE TO THE ACCURACY THEREOF AND SAME IS SUBMITTED SUBJECT TO ERRORS, OMISSIONS, CHANGE OF PRICE, RENTAL OR OTHER CONDITIONS PRIOR TO SALE, LEASE OR FINANCING OR WITHDRAWAL WITHOUT NOTICE. NO LIABILITY OF ANY KIND IS TO BE IMPOSED ON THE BROKER HEREIN.

2944 N 44th St, Suite 200

Phoenix, Arizona

+1 602 955 4000

[naihazizon.com](http://naihazizon.com)

# 42302 N Vision Way

Anthem, Arizona 85086

For Lease

Small Office &  
Warehouse Suites



For Lease: \$0.70-\$1.00/SF/month, NNN

**Rick Foss**

+1 602 393 6658 • rick.foss@naihormon.com

**Jay Olson**

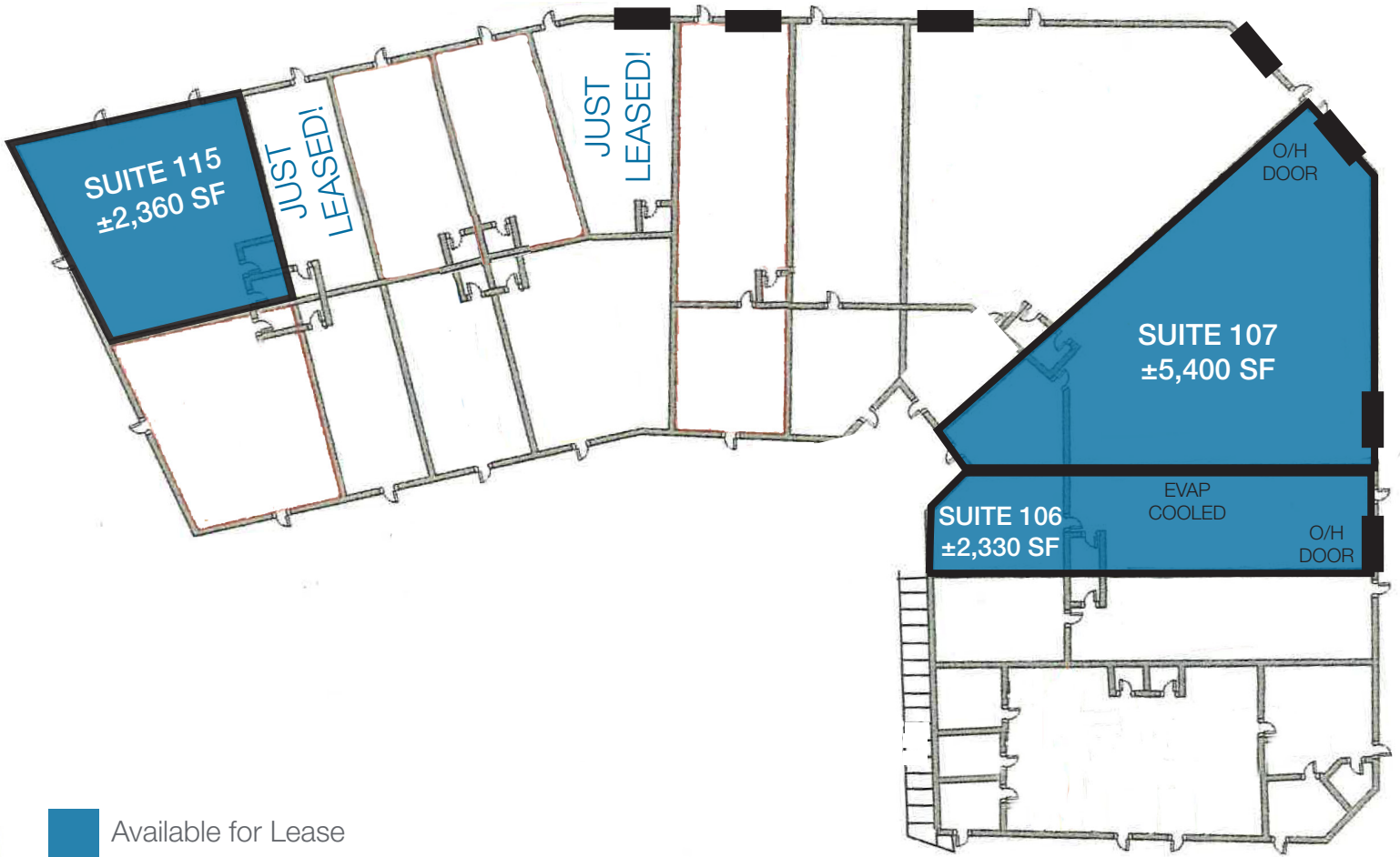
+1 602 393 6613 • jay.olson@naihormon.com

# 42302 N Vision Way

Anthem, Arizona 85086

For Lease

Small Office &  
Warehouse Suites



Available for Lease

## Availabilities

**SUITE 106**  
27% Office, 73% Evap-Cooled Warehouse, 1 10'x12' O/H Door      ±2,330 SF      \$0.92/SF, NNN

**SUITE 107**  
Warehouse, 2 O/H doors, 100% A/C, 2 Restrooms      ±5,400 SF      \$0.70/SF, NNN

**SUITE 115**      ±2,360      \$1.00/SF, NNN

**\*SUITE 119**  
Open Warehouse  
1 O/H door

**JUST LEASED**

For Lease: \$0.70-\$1.00/SF/month, NNN

**Rick Foss**

+1 602 393 6658 • rick.foss@naihorizon.com

**Jay Olson**

+1 602 393 6613 • jay.olson@naihorizon.com

**NAI**Horizon