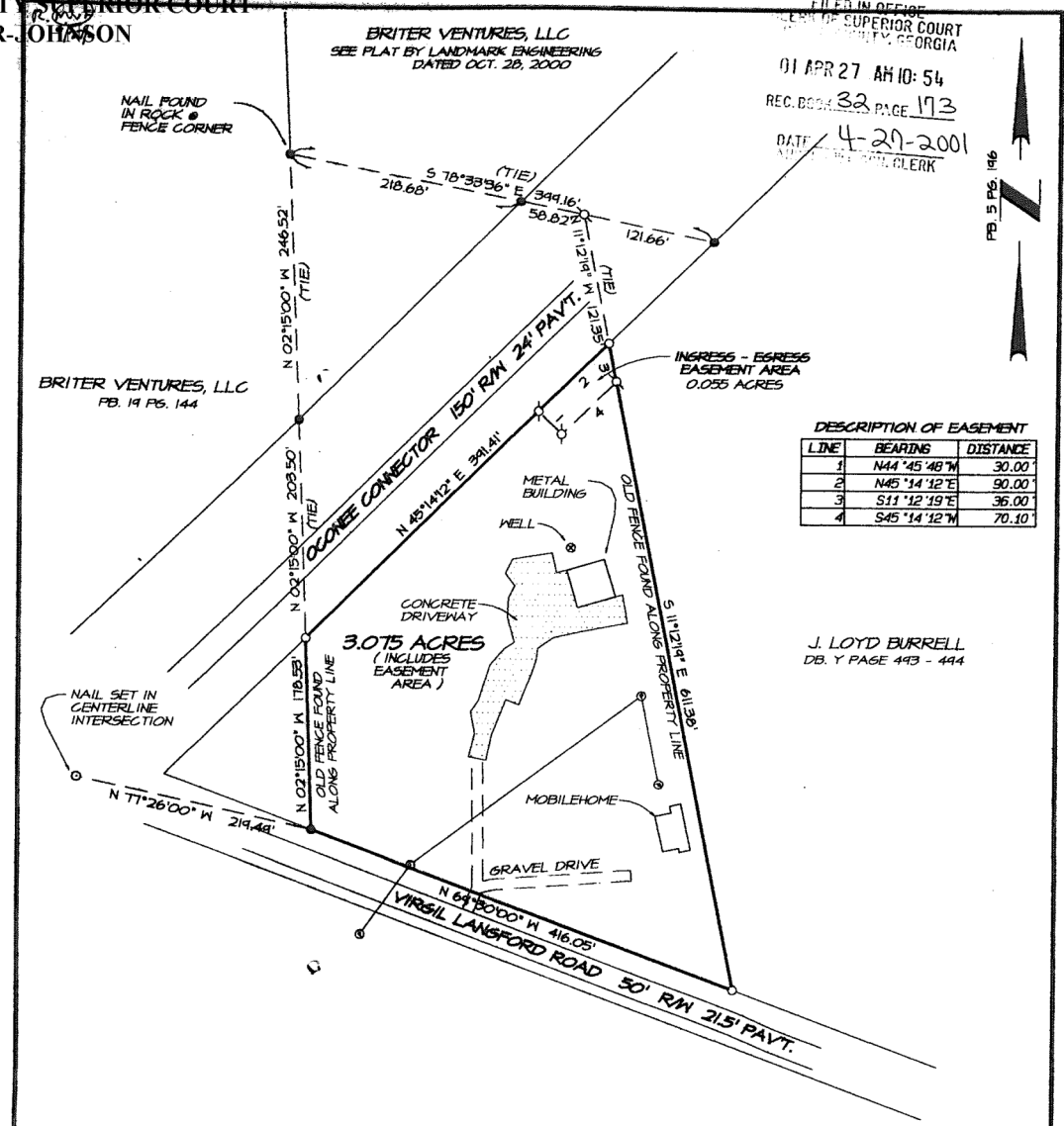


FILED
10:54 AM
04/27/2001

OCONEE COUNTY SUPERIOR COURT
ANGELA ELDER-JOHNSON
CLERK

BK 32 PG 173A

FILED IN OFFICE
CLERK OF SUPERIOR COURT
OCONEE COUNTY, GEORGIA
01 APR 27 AM 10:54
REC. BOOK 32 PAGE 173
DATE 4-27-2001
BY CLERK



DESCRIPTION OF EASEMENT

LINE	BEARINGS	DISTANCE
1	N44°45'48" W	30.00'
2	N45°14'12" E	90.00'
3	S11°12'19" E	36.00'
4	S45°14'12" W	70.10'

J. LOYD BURRELL
DB. Y PAGE 443 - 444

NOTE:
THIS PLAT REPRESENTS A SURVEY OF
TAX MAP C-01, PARCEL 32B

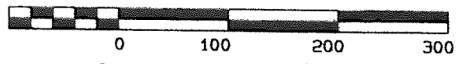
REF.:
DEED BOOK 447 PAGES 230 - 233
PLAT BOOK 3 PAGE 146
DEED BOOK 16 PAGE 4

STREET ADDRESS:
1180 VIRGIL LANGFORD ROAD

THIS LOT IS NOT LOCATED IN A 100
YEAR FLOOD PLAIN

I hereby certify this plat is a correct representation
of the land listed and has been prepared in
conformity with the minimum standards and re-
quirements of law.

GRAPHIC SCALE 1"=100'



● IPF - Iron Pin Found ○ IPS - Iron Pin Set ∅ - Traverse Point ☒ R/W Monument

		SURVEY FOR JOHN E. GRIFFIN					
GNC: 1331 DRAWN BY: MIKE W. DNG NAME: VIRGIL FIELD BOOK: 12-102	COUNTY: OCONEE STATE: GEORGIA DATE: 02-28-2001 INSTRUMENT: LKCA PLAT CLOSURE: V7816-42 FIELD CLOSURE: 104.741 ANGLE CLOSURE: N/A	COUNTY: OCONEE STATE: GEORGIA DATE: 02-28-2001 INSTRUMENT: LKCA PLAT CLOSURE: V7816-42 FIELD CLOSURE: 104.741 ANGLE CLOSURE: N/A	125 SMITHONIA ROAD WINTERVILLE, GEORGIA 30683 (706) 742-8535	125 SMITHONIA ROAD WINTERVILLE, GEORGIA 30683 (706) 742-8535	125 SMITHONIA ROAD WINTERVILLE, GEORGIA 30683 (706) 742-8535	125 SMITHONIA ROAD WINTERVILLE, GEORGIA 30683 (706) 742-8535	125 SMITHONIA ROAD WINTERVILLE, GEORGIA 30683 (706) 742-8535