



OFFICE SPACE AVAILABLE FOR LEASE

CROWN CENTER OFFICE PARK

26431 & 26451 Crown Valley Parkway • Mission Viejo, California

for more information, visit www.lee-irvine.com



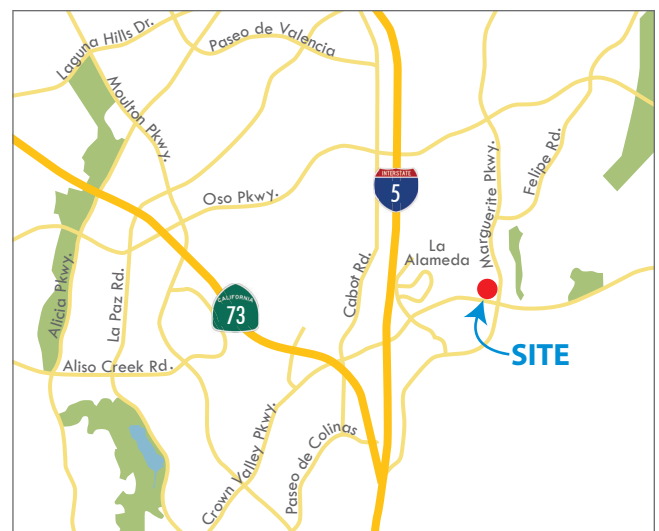
Exclusively listed by:

Matt Fryer
Senior Vice President
License ID# 01333079
949.790.3122
mfryer@leeirvine.com

Travis Watts
Senior Associate
License ID# 01927498
949.790.3140
twatts@leeirvine.com

PROPERTY FEATURES

- 2-story, high image office buildings
- Proactive and responsive ownership
- Located in the heart of Mission Viejo
- Excellent 5 Freeway access
- 4:1 parking ratio
- Close proximity to retail amenities





OFFICE SPACE AVAILABLE FOR LEASE

CROWN CENTER OFFICE PARK

26431 & 26451 Crown Valley Parkway • Mission Viejo, California



26431 AVAILABILITY

Suite	Sq. Ft.	Lease Rate/SF	Description
250	1,512	\$2.05 FSG	CALL TO SHOW — 2 Large Offices, Reception Area, Kitchen, Open Layout with Extensive Window Line & Private Balconies

26451 AVAILABILITY

Suite	Sq. Ft.	Lease Rate/SF	Description
220	705	\$2.05 FSG	CALL TO SHOW — Large executive office, open area, reception, storage room, balcony, view suite.

Exclusively listed by:

Matt Fryer
Senior Vice President
License ID# 01333079
949.790.3122
mfryer@leeirvine.com

Travis Watts
Senior Associate
License ID# 01927498
949.790.3140
twatts@leeirvine.com





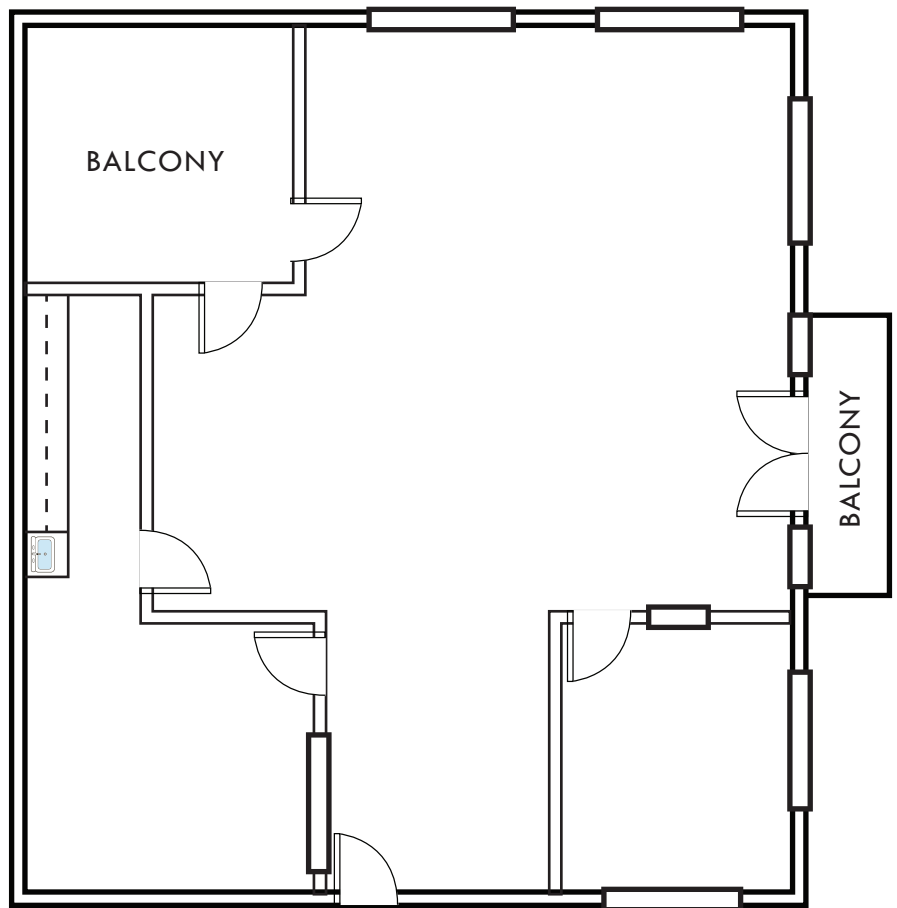
OFFICE SPACE AVAILABLE FOR LEASE

CROWN CENTER OFFICE PARK

26431 Crown Valley Parkway • Mission Viejo, California



26431 CROWN VALLEY PARKWAY
SUITE 250 - 1,512 SQ. FT.



Exclusively listed by:

Matt Fryer
Senior Vice President
License ID# 01333079
949.790.3122
mfryer@leeirvine.com

Travis Watts
Senior Associate
License ID# 01927498
949.790.3140
twatts@leeirvine.com



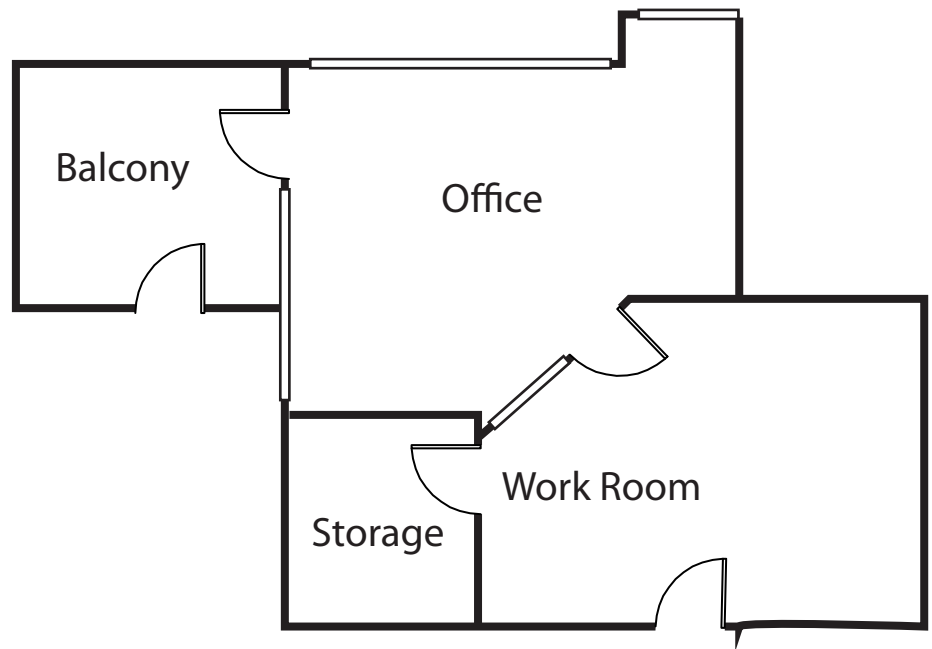
OFFICE SPACE AVAILABLE FOR LEASE

CROWN CENTER OFFICE PARK

26451 Crown Valley Parkway • Mission Viejo, California



26451 CROWN VALLEY PARKWAY
SUITE 220 - 705 SQ. FT.



Exclusively listed by:

Matt Fryer

Senior Vice President

License ID# 01333079

949.790.3122

[mfryer@leeirvine.com](mailto:m Fryer@leeirvine.com)

Travis Watts

Senior Associate

License ID# 01927498

949.790.3140

twatts@leeirvine.com