



INDUSTRIAL SPACE FOR LEASE
150 S. ADKINS WAY
 MERIDIAN, ID 83642

COMMERCIAL



PROPERTY INFORMATION

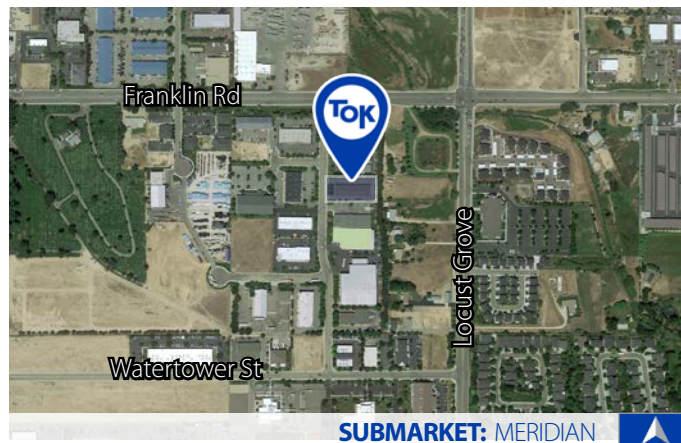
Submarket:	Meridian	Divisible:	No
Available:	Immediately	Ceiling Hght:	14'
Bldg Type:	Industrial	Zoning	IL (Industrial)
Bldg Size:	11, 444 SF	Lease Type:	NNN/\$0.28 SF
Avail Space:	3, 000 SF	Lease Term:	3-5 Years
Grade Level:	OH Door		

AVAILABLE SPACE

SPACE:		RSF:	RENT/SF	PER MONTH:
130	Office	1, 200 SF		
	Whse	1, 718 SF		
	Total	2, 918 SF	\$0.80/SF	\$2,330.00

CONTACT

Jim Boyd
 208.947.5522
 ✉ jim@tokcommercial.com



LISTING COMMENTS

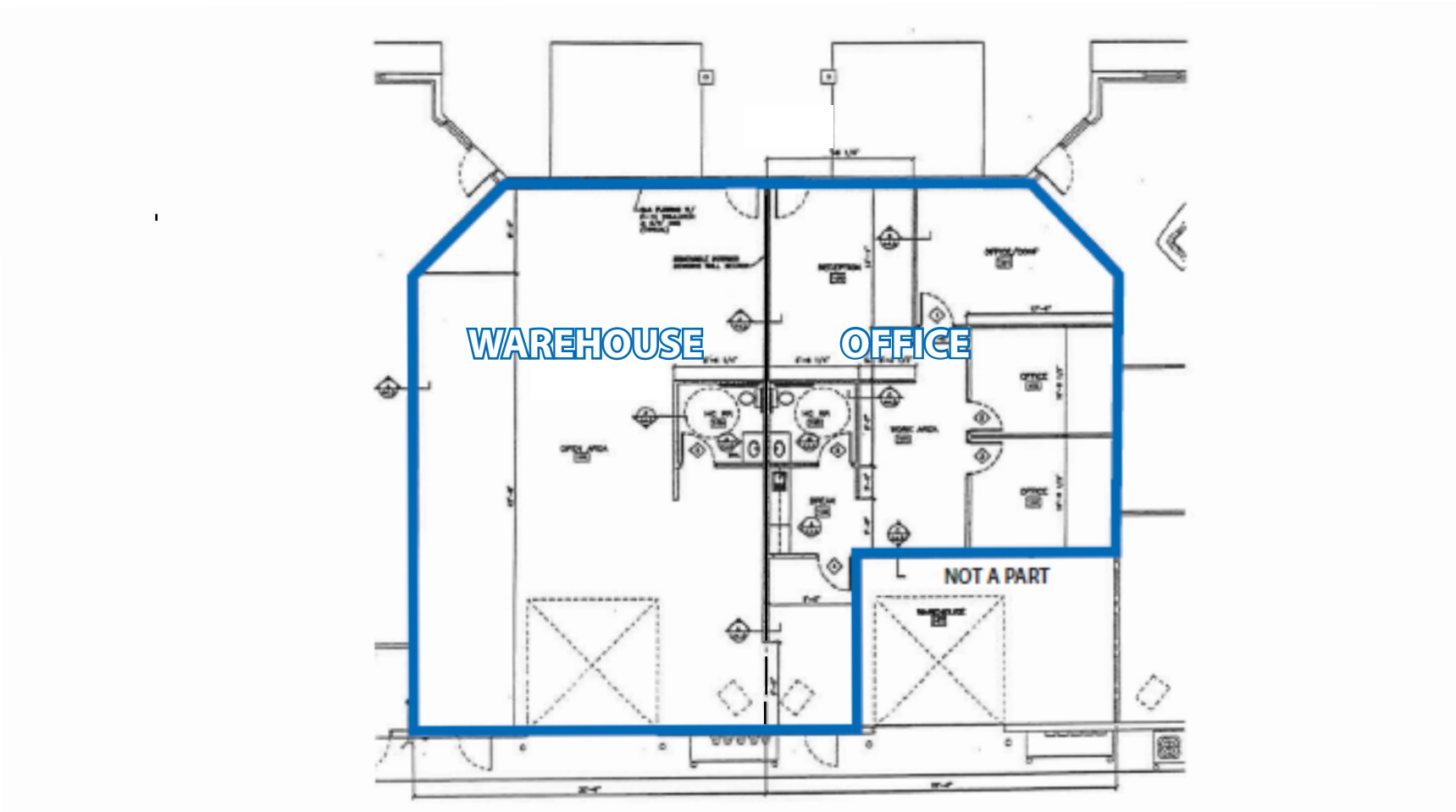
- Outside storage yard.
- 2 Restrooms
- Beautiful office buildout.
- Fire-sprinklered.
- Block construction
- One overhead door.
- Conveniently located off Franklin Road.



INDUSTRIAL SPACE FOR LEASE
150 S. ADKINS WAY
MERIDIAN, ID 83642

COMMERCIAL

FLOOR PLAN - SUITE 130

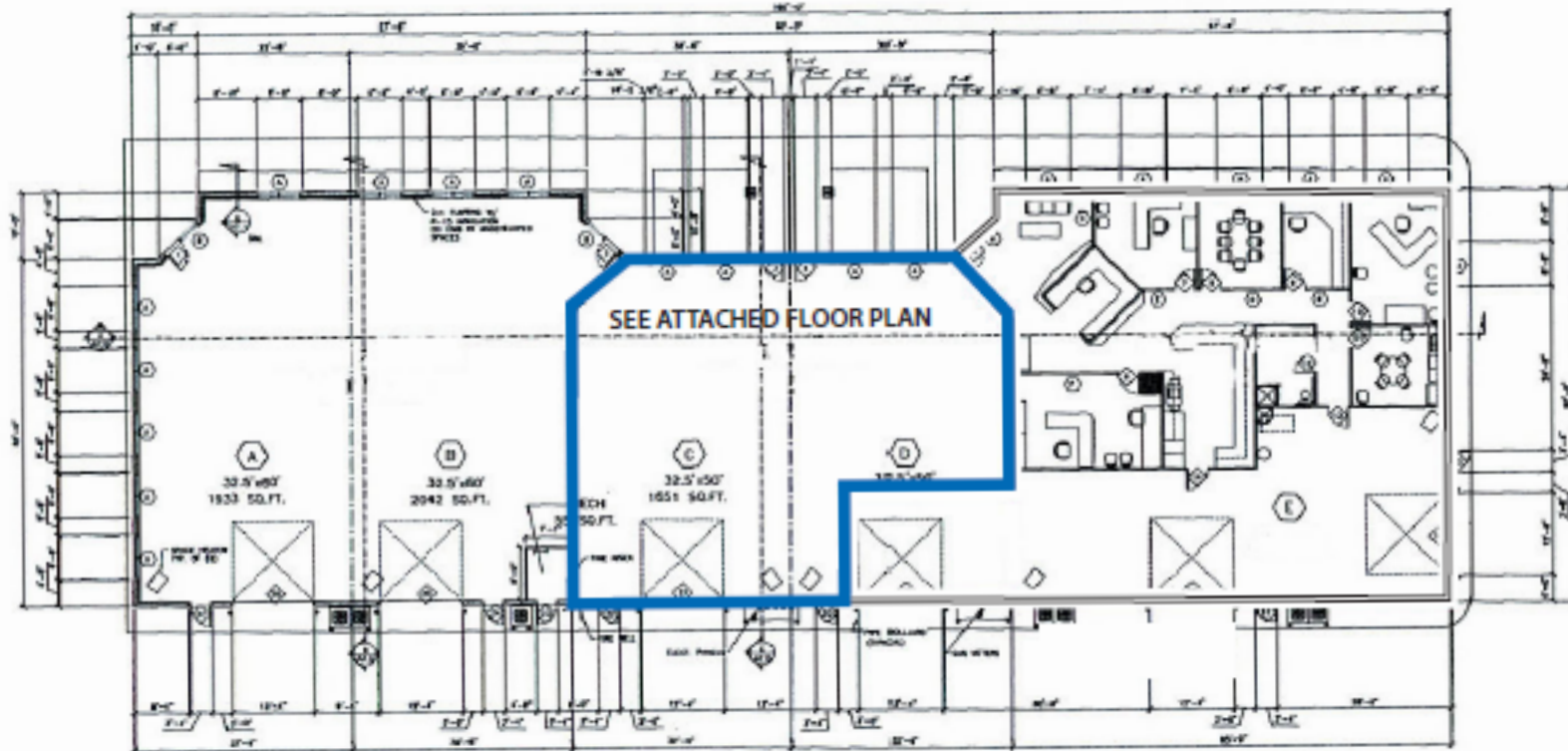




INDUSTRIAL SPACE FOR LEASE
150 S. ADKINS WAY
MERIDIAN, ID 83642

COMMERCIAL

FLOOR PLAN - SUITE 130





INDUSTRIAL SPACE FOR LEASE
150 S. ADKINS WAY
MERIDIAN, ID 83642

COMMERCIAL

SITE AERIAL

