

UPPER  
WEST SIDE

NEW YORK  
NY

# 2012 BROADWAY



# SPACE DETAILS

## LOCATION

East block between 68th and 69th Streets

## APPROXIMATE SIZE

Ground Floor	882 SF
Basement	450 SF
Total	1,332 SF

## FRONTAGE

Ground Floor	18 FT
--------------	-------

## SITE STATUS

Previously Nanoosh

## NEIGHBORS

Zara, Apple, T-Mobile, CorePower Yoga, TD Bank, Just Salad, Fidelity Investments, HSBC Bank, Banana Republic, Century21, Pottery Barn, Westside Restaurant, Noi Due Carne, Sapphire Cuisines of India, Shakespeare & Co, AMC Lincoln Square, Roche Bobois, CityMD

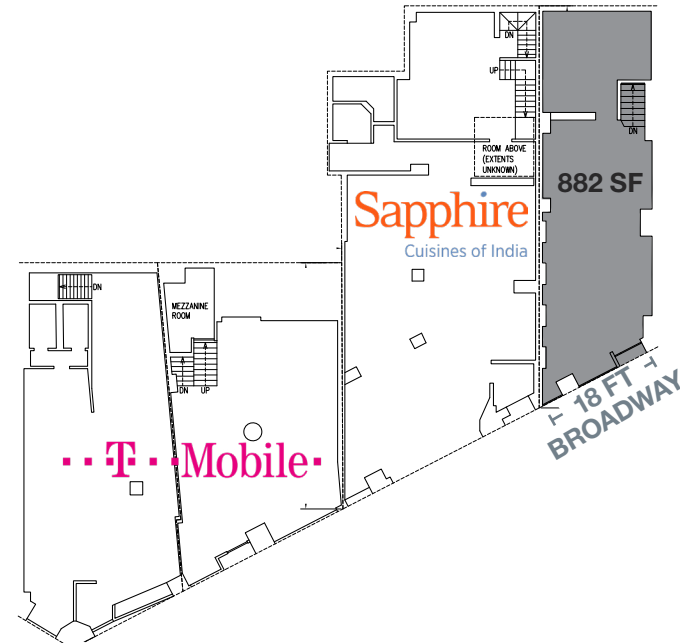
## COMMENTS

Prime Upper West Side QSR location along Broadway

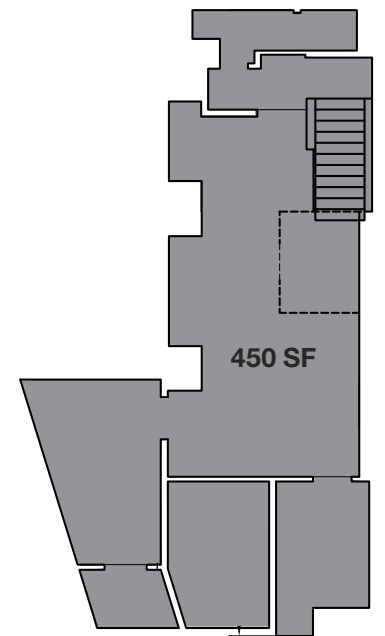
Steps from Lincoln Square and Central Park

Three blocks from the **1 2 3** express subway stop at West 72nd Street, with more than 12.8 million riders annually

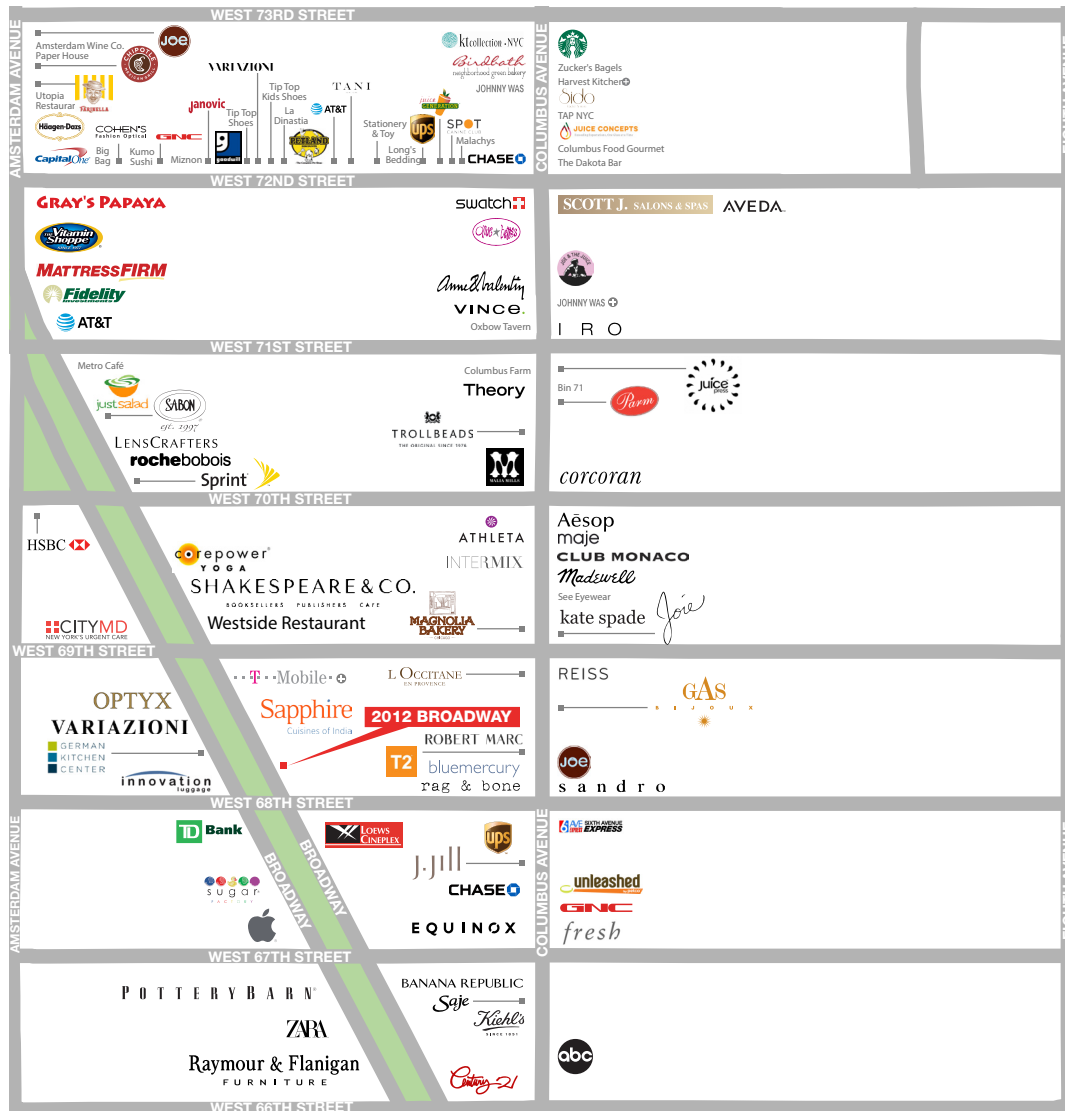
## GROUND FLOOR



## BASEMENT



# AREA RETAIL



⊕ COMING SOON

## CONTACT EXCLUSIVE AGENTS

**ROSS KAPLAN**  
212.850.5418  
rkaplan@ngkf.com

**LUCAS KOOYMAN**  
212.372.2384  
lkooyman@ngkf.com



NGKF.COM

© 2020 NEWMARK KNIGHT FRANK RETAIL | The information contained herein has been obtained from sources deemed reliable but has not been verified and no guarantee, warranty or representation, either express or implied, is made with respect to such information. Terms of sale or lease and availability are subject to change or withdrawal without notice.