

Your private 5,037 rsf oasis in the Designer District

Space highlights

- New prebuilt with ADA compliant baths and 2 zone tenant-controlled AC system
- New, oversized operable windows on 4 sides with great views and abundant natural light
- Wood flooring with exposed ceilings and brick
- Direct electric

Availability

Entire 6th Floor

5,037 RSF

Possession

Immediate

Term

Negotiable

Rate

Upon request

Nearby transportation

Steps from the **4 5 6 F N Q R W**
subways and FDR Drive

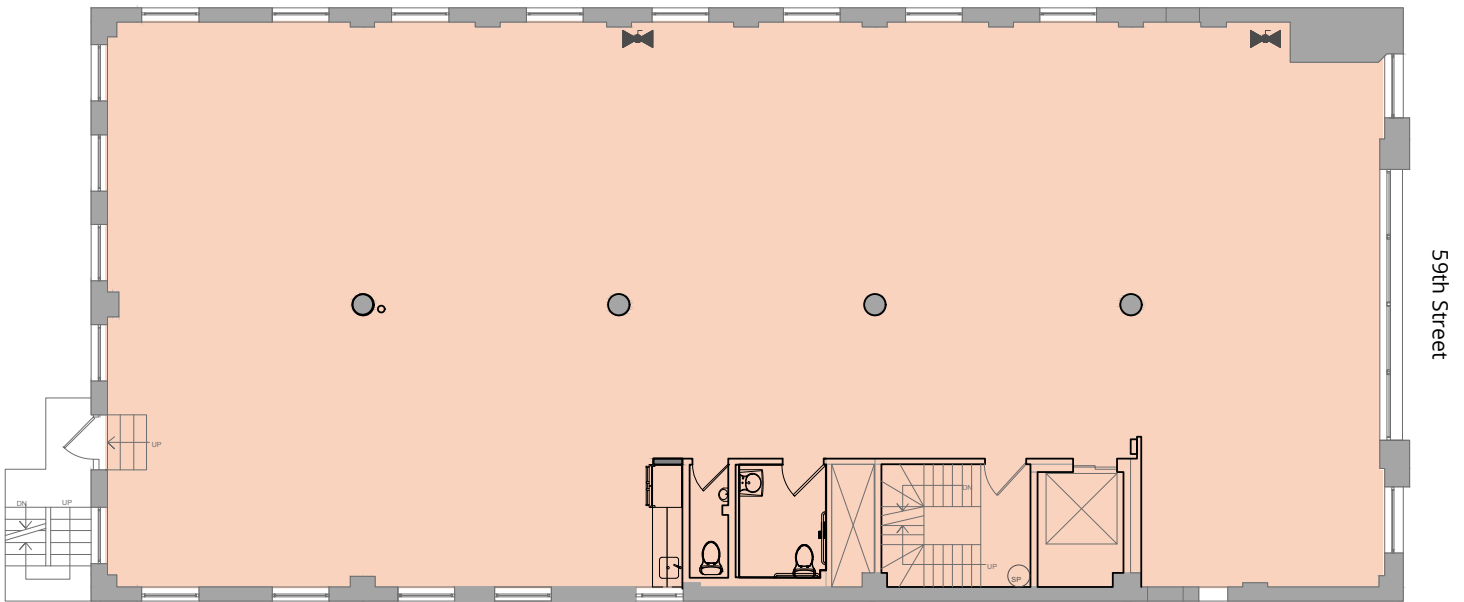
Get more information: **Todd Korren** | Principal
D. 212 729 3487 | M. 516 815 7496
todd.korren@avisonyoung.com

Rachel Rosenfeld | Associate
D. 212 729 6703 | M. 631 804 1011
rachel.rosenfeld@avisonyoung.com

Office space for lease

330 East 59th Street | between 2nd and 1st Avenues

Entire 6th Floor | 5,037 SF



Get more information:

Todd Korren | Principal
D. 212 729 3487 | M. 516 815 7496
todd.korren@avisonyoung.com

Rachel Rosenfeld | Associate
D. 212 729 6703 | M. 631 804 1011
rachel.rosenfeld@avisonyoung.com

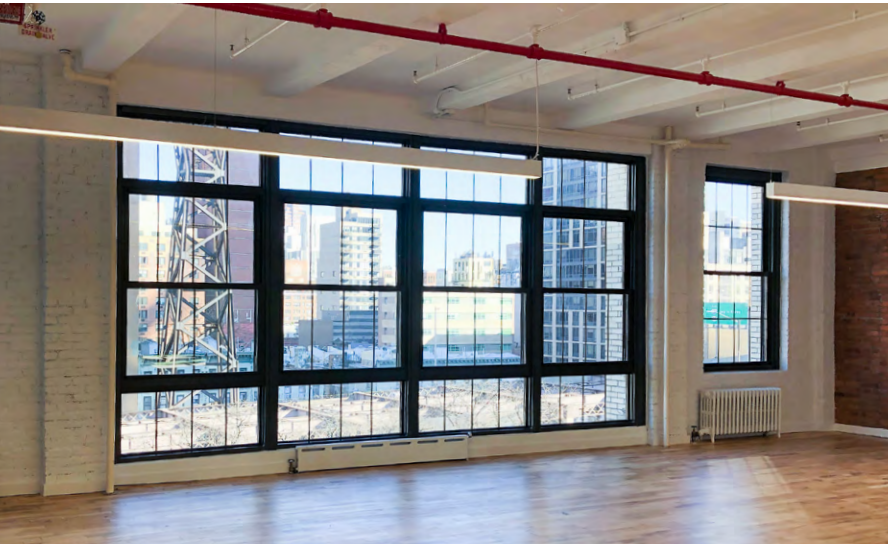


© 2022. Avison Young. Information contained herein was obtained from sources deemed reliable and, while thought to be correct, have not been verified. Avison Young does not guarantee the accuracy or completeness of the information presented, nor assumes any responsibility or liability for any errors or omissions therein.

avisonyoung.com

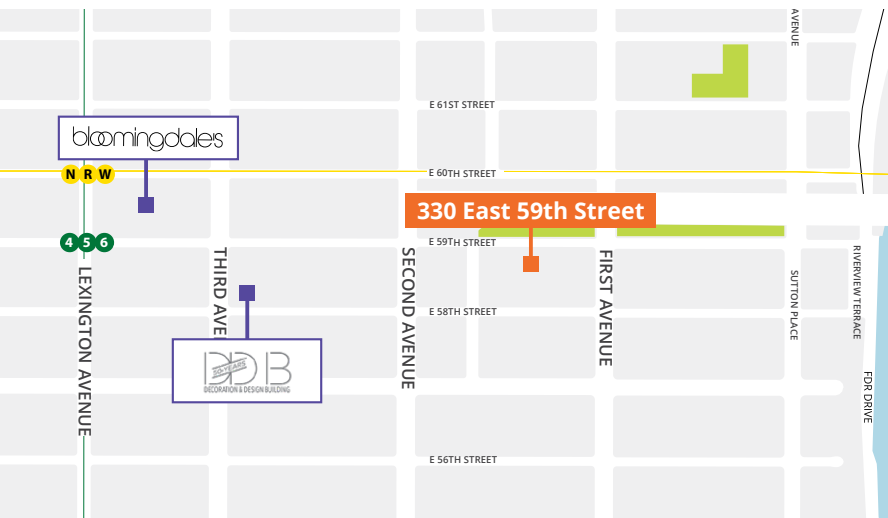
Office space for lease

330 East 59th Street | between 2nd and 1st Avenues



Building highlights

- Close proximity to D&D building
- Overlooks Queensboro Bridge
- Long term stable ownership
- Flexible term



Get more information:

Todd Korren | Principal
D. 212 729 3487 | M. 516 815 7496
todd.korren@avisonyoung.com

Rachel Rosenfeld | Associate
D. 212 729 6703 | M. 631 804 1011
rachel.rosenfeld@avisonyoung.com



avisonyoung.com