

BUILDING FOR SALE



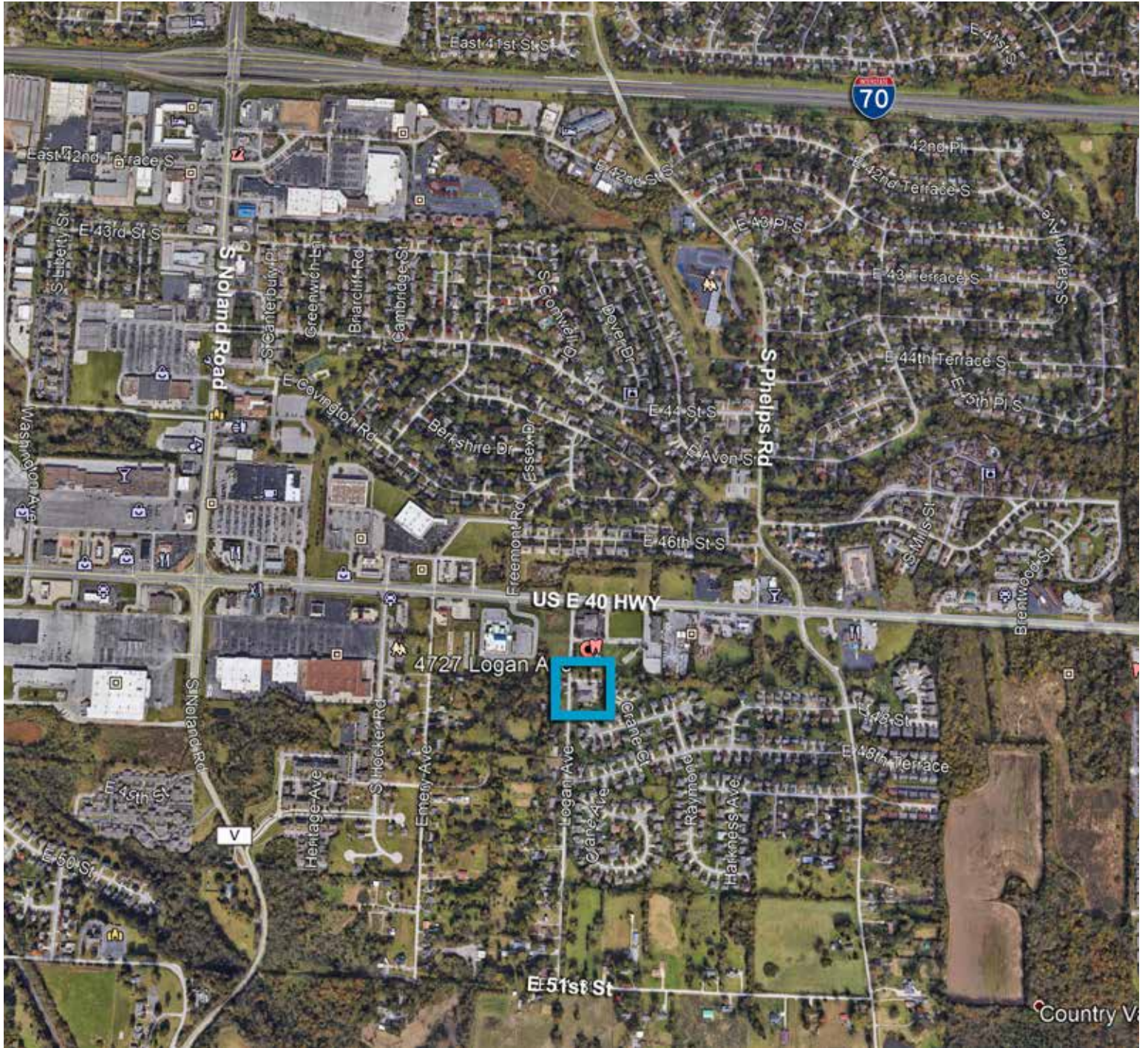
OFFICE SPACE HIGHLIGHTS

- **Approximately 5,780 SF Building**
- East Jackson County Submarket
- Easy Highway access to US-40 and I-70
- 20 space parking lot
- Sale Price: \$399,000

LEASING CONTACTS

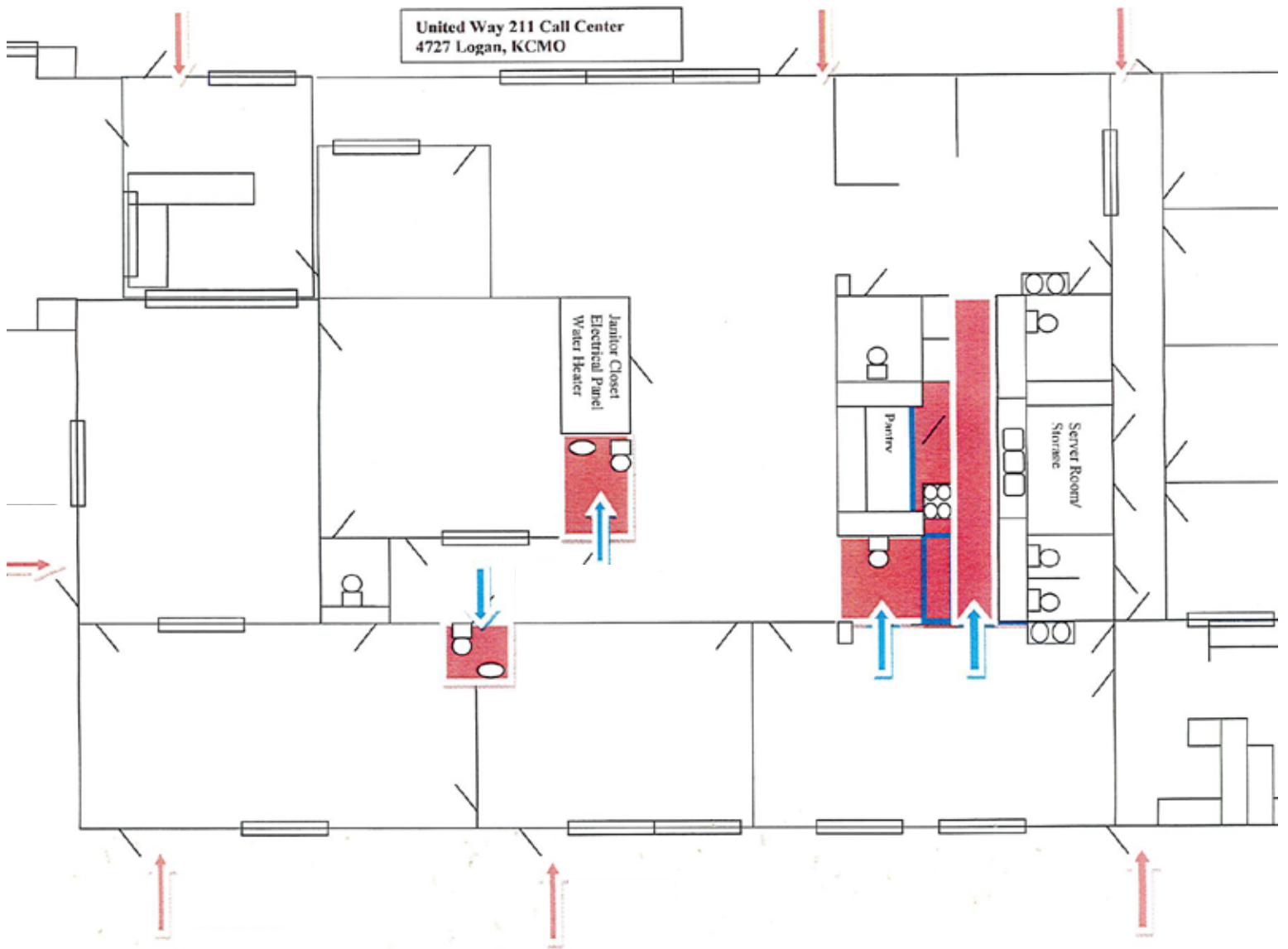
JOHN D. COE, SIOR, CCIM
P (816) 701-5064
jcoe@copaken-brooks.com

KANSAS CITY, MISSOURI



DEMOGRAPHIC HIGHLIGHTS

| | 1 mile | 3 miles |
|----------------------|----------|----------|
| Population | 5,908 | 58,118 |
| Households | 2,626 | 24,820 |
| Avg HH Income | \$60,937 | \$58,728 |





BUILDING FOR SALE/LEASE OR HEADER



LEASING CONTACT

JOHN D. COE, SIOR, CCIM
P (816) 701-5064
jcoe@copaken-brooks.com

All information furnished regarding property for sale or lease is from sources deemed reliable, but no warranty or representation is made as to the accuracy thereof and the same is subject to errors, omissions, changes of prices, rental or other conditions, prior sale or lease, or withdrawal without notice.