

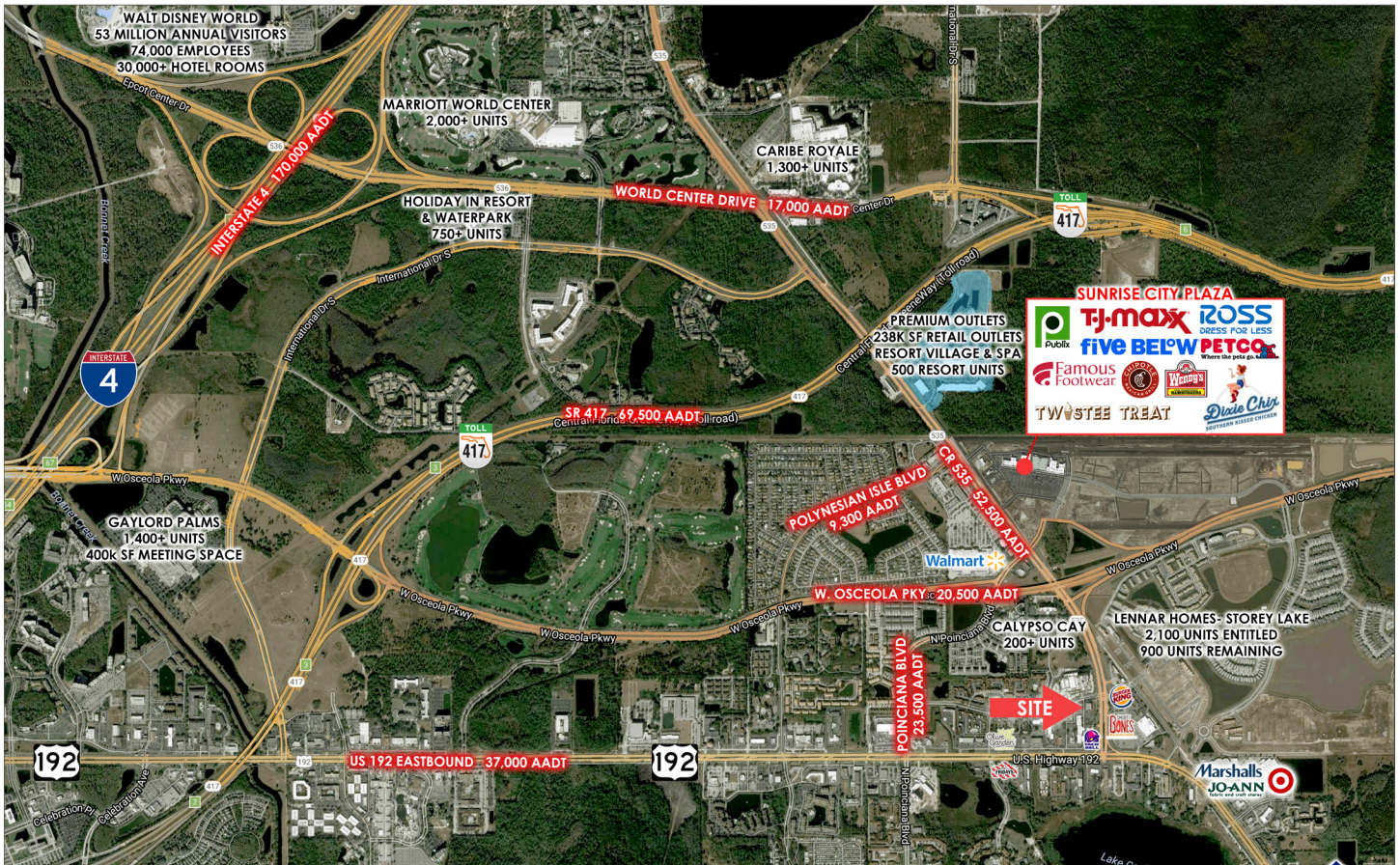
FANTASY PLAZA- RETAIL AVAILABLE FOR LEASE

2956-2960 Vineland Road, Kissimmee FL 34746

RETAIL AVAILABLE IN THE HEART OF ORLANDO'S TOURIST CORRIDOR

GLA: 14,398 SF
GROUND FLOOR RETAIL: 1,440 SF / 8,425 SF
ABLE TO BE DIVIDED
2ND FLOOR OFFICE: 870 SF

- Just off US 192 & CR 535
- Located at signalized hard corner intersection
- High Traffic Counts- 32,500+ AADT
- Minutes from Walt Disney World & Sea World
- Surrounded by strong national retailers, restaurants, and hotels



DEMOGRAPHICS

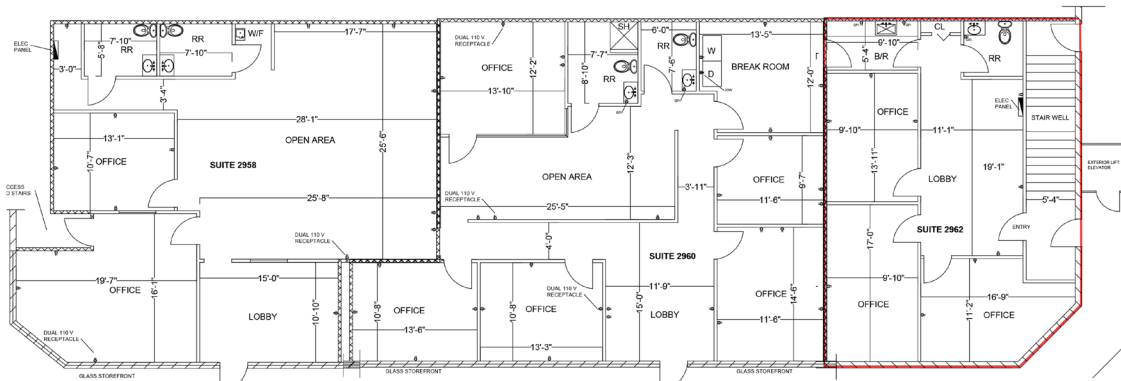
POPULATION	AVG HH INCOME	DAYTIME POP.
5 MIN 7,544	5 MIN \$54,081	5 MIN 4,766
10 MIN 33,349	10 MIN \$60,491	10 MIN 28,392
15 MIN 115,898	15 MIN \$61,802	15 MIN 119,298

LIC. REAL ESTATE BROKER



Sandi Bargfrede
 sandi@acrefl.com
 Office (407) 392-2055 ext 6
 Cell (407) 491-8149

FANTASY PLAZA- SITE PLAN

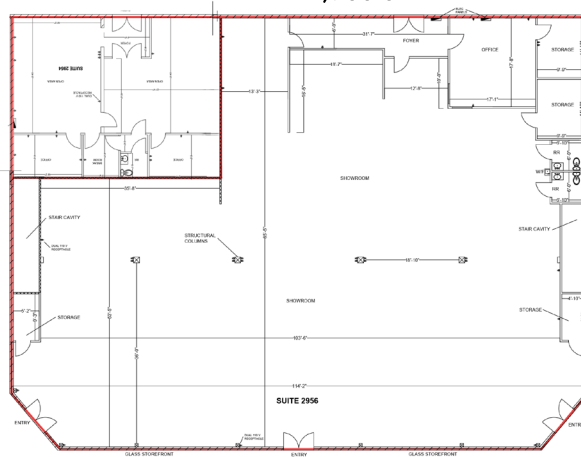


SUITE 2958
1,500 SF

SUITE 2960
1,700 SF

SUITE 2962
870 SF

SUITE 2954
1,440 SF



SUITE 2956
8,425 SF
ABLE TO BE DIVIDED



ACRE COMMERCIAL REAL ESTATE | OFFICE: (407) 392-2055 | WWW.ACREFL.COM
CENTRAL FLORIDA | 1052 W. STATE ROAD 436 | SUITE 1064 | ALTAMONTE SPRINGS, FL 32714
WEST COAST FLORIDA | 730 S. STERLING AVENUE | SUITE 212 | TAMPA, FL 33609