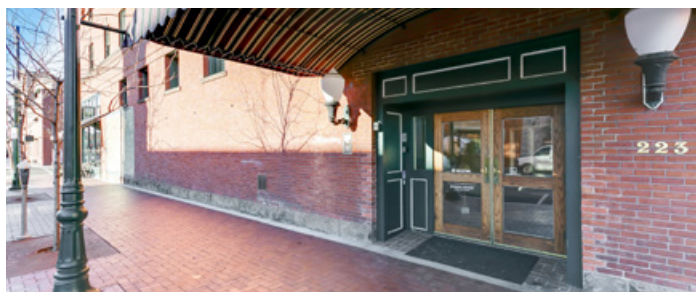


DOWNTOWN OFFICE SPACES



Property Highlights

Suite 415	278 SF - \$425/Month
Suite 425	1,827 SF - \$2,778.75/Month
Lease Type	Full Service Including Janitorial & Utilities
LockBox	No, Spaces Shown by Appointment Only - Contact Agent



Jennifer McEntee
Director
Office Specialist
+1 208 287 9495
jennifer.mcentee@paccra.com

Bree Wells
Associate
Office Specialist
+1 208 287 9492
bree.wells@paccra.com

Listing Features

- Prime Downtown Boise Location at the Corner of 6th & Idaho
- Suite 425 Includes New Sink Area
- Beautiful Historic Landmark Building
- Short Term Leases Available, Contact Agent for Details
- Existing Tenants Include Java Coffee & Spa Urbana
- Spaces & Lobby Area are Newly Remodeled
- Secure Building with After Hours Access
- Full Service Lease Including Janitorial & Utilities
- Tenants are Allowed Access to a Shared Conference Room
- **Space Showings By Appointment Only, Contact Pacific Agent: Jennifer McEntee**

DJ Thompson
Associate Director
Office Specialist
+1 208 287 8438
dj.thompson@paccra.com

398 South 9th Street, Ste 260
Boise, Idaho 83702
Main +1 208 287 9500
Fax +1 208 287 9501
paccra.com

Independently Owned and Operated / A Member of the Cushman & Wakefield Alliance

Cushman & Wakefield Copyright 2015. No warranty or representation, express or implied, is made to the accuracy or completeness of the information contained herein, and same is submitted subject to errors, omissions, change of price, rental or other conditions, withdrawal without notice, and to any special listing conditions imposed by the property owner(s). As applicable, we make no representation as to the condition of the property (or properties) in question.



Restaurants in Close Proximity

- The Melting Pot
- Flatbread Pizzeria
- Jimmy John's Sandwiches
- Fork
- Bardenay
- Reef

Jennifer McEntee

Director
Office Specialist
+1 208 287 9495
jennifer.mcentee@paccra.com

Bree Wells

Associate
Office Specialist
+1 208 287 9492
bree.wells@paccra.com

DJ Thompson

Associate Director
Office Specialist
+1 208 287 8438
dj.thompson@paccra.com

398 South 9th Street, Ste 260
Boise, Idaho 83702

Main +1 208 287 9500

Fax +1 208 287 9501

paccra.com

Independently Owned and Operated / A Member of the Cushman & Wakefield Alliance

Cushman & Wakefield Copyright 2015. No warranty or representation, express or implied, is made to the accuracy or completeness of the information contained herein, and same is submitted subject to errors, omissions, change of price, rental or other conditions, withdrawal without notice, and to any special listing conditions imposed by the property owner(s). As applicable, we make no representation as to the condition of the property (or properties) in question.

Businesses in Close Proximity

- Boise City Hall
- Idaho State Capital
- Downtown Boise Association
- St Luke's Medical Center
- Elk's Rehabilitation Hospital
- Basque Cultural Center

The Eagles Center Offices

223 North 6th Street, Boise, Idaho 83702



Jennifer McEntee
Director
Office Specialist
+1 208 287 9495
jennifer.mcentee@paccra.com

Bree Wells
Associate
Office Specialist
+1 208 287 9492
bree.wells@paccra.com

DJ Thompson
Associate Director
Office Specialist
+1 208 287 8438
dj.thompson@paccra.com

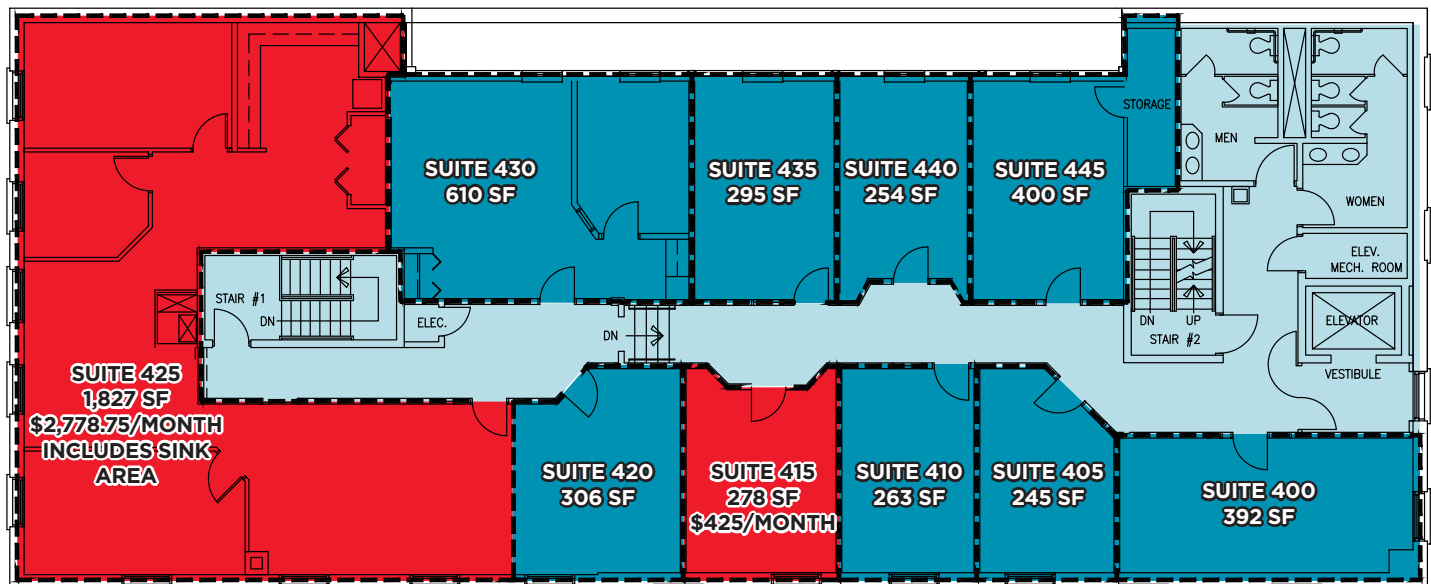
398 South 9th Street, Ste 260
Boise, Idaho 83702
Main +1 208 287 9500
Fax +1 208 287 9501
paccra.com

Independently Owned and Operated / A Member of the Cushman & Wakefield Alliance

Cushman & Wakefield Copyright 2015. No warranty or representation, express or implied, is made to the accuracy or completeness of the information contained herein, and same is submitted subject to errors, omissions, change of price, rental or other conditions, withdrawal without notice, and to any special listing conditions imposed by the property owner(s). As applicable, we make no representation as to the condition of the property (or properties) in question.



Fourth Floor - Two Suites Available - 287 to 1,827 SF



Jennifer McEntee
Director
Office Specialist
+1 208 287 9495
jennifer.mcintee@paccra.com

Bree Wells
Associate
Office Specialist
+1 208 287 9492
bree.wells@paccra.com

DJ Thompson
Associate Director
Office Specialist
+1 208 287 8438
dj.thompson@paccra.com

398 South 9th Street, Ste 260
Boise, Idaho 83702
Main +1 208 287 9500
Fax +1 208 287 9501
paccra.com

Independently Owned and Operated / A Member of the Cushman & Wakefield Alliance

Cushman & Wakefield Copyright 2015. No warranty or representation, express or implied, is made to the accuracy or completeness of the information contained herein, and same is submitted subject to errors, omissions, change of price, rental or other conditions, withdrawal without notice, and to any special listing conditions imposed by the property owner(s). As applicable, we make no representation as to the condition of the property (or properties) in question.

