

Property For Lease

# 474 Hempstead Turnpike

474 Hempstead Turnpike Elmont, NY 11003



For More Information:



**Christopher Pesce**

Associate Broker  
Douglas Elliman Commercial - Long Island  
631.858.2470  
christopher.pesce@elliman.com



**Kenneth Hester**

Licensed Real Estate Salesperson  
Douglas Elliman Commercial - Long Island  
516.641.0342  
kenneth.hester@elliman.com



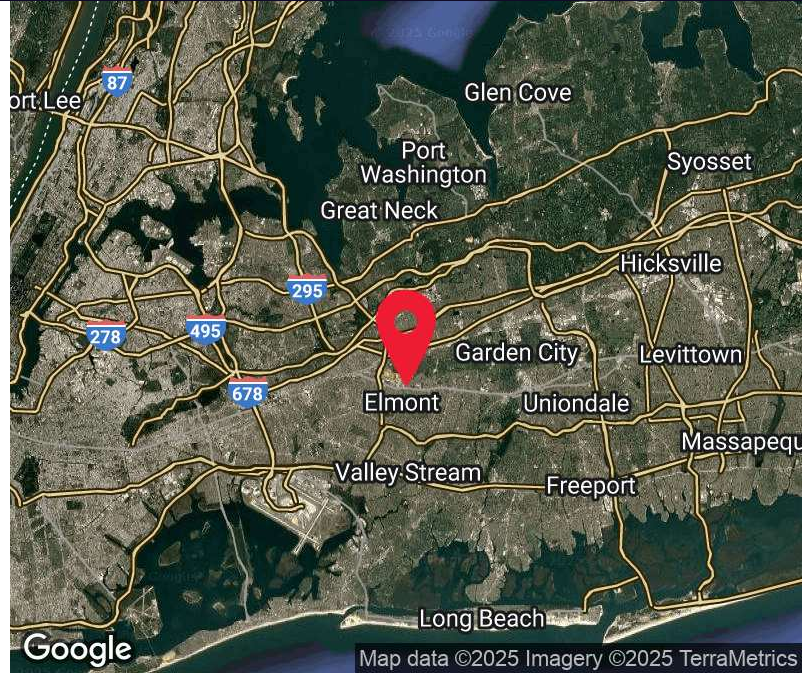
[WWW.ELLIMANCOMMERCIAL.COM](http://WWW.ELLIMANCOMMERCIAL.COM)

THE PROPERTY CONTAINED WITHIN THIS DOCUMENT IS BEING EXCLUSIVELY REPRESENTED BY DOUGLAS ELLIMAN REAL ESTATE COMMERCIAL DIVISION, 650 SMITHTOWN BYPASS STE. 117 SMITHTOWN, NY 11787 631.858.2405 © 2023 DOUGLAS ELLIMAN COMMERCIAL OF LI, LLC. ALL MATERIAL PRESENTED HEREIN IS INTENDED FOR INFORMATION PURPOSES ONLY. WHILE THIS INFORMATION IS BELIEVED TO BE CORRECT, IT IS REPRESENTED SUBJECT TO ERRORS, OMISSIONS, CHANGES OR WITHDRAWAL WITHOUT NOTICE. ALL PROPERTY INFORMATION, INCLUDING, BUT NOT LIMITED TO SQUARE FOOTAGE, ROOM COUNT, ZONING IN THE LISTING SHOULD BE VERIFIED BY YOUR OWN ATTORNEY, ARCHITECT OR ZONING EXPERT. IF YOUR PROPERTY IS CURRENTLY LISTED WITH ANOTHER REAL ESTATE BROKER, PLEASE DISREGARD THIS OFFER. IT IS NOT OUR INTENTION TO SOLICIT THE OFFERINGS OF OTHER REAL ESTATE BROKERS. WE COOPERATE WITH THEM FULLY. EQUAL HOUSING OPPORTUNITY.



# Retail Property For Lease

## 474 Hempstead Turnpike Elmont, NY 11003



Offering Summary	
Lease Rate:	\$38.50 PSF
Available SF:	+/- 1,000 SF
Zoning:	Business (X)
Traffic Count:	37,000

### Property Overview

Welcome to an exciting opportunity in the heart of Elmont! This prime +/- 1000 square feet retail space located at 474 Hempstead Turnpike offers an ideal environment for your business to thrive. With its strategic location, excellent visibility, and versatile layout, this space is perfect for a variety of retail ventures.

### Property Highlights

- 1 Mile from UBS Arena
- 37,000 Cars Per Day

For More Information:



**Christopher Pesce**

Associate Broker  
Douglas Elliman Commercial - Long Island  
631.858.2470  
christopher.pesce@elliman.com



**Kenneth Hester**

Licensed Real Estate Salesperson  
Douglas Elliman Commercial - Long Island  
516.641.0342  
kenneth.hester@elliman.com

**Douglas Elliman**  
Commercial



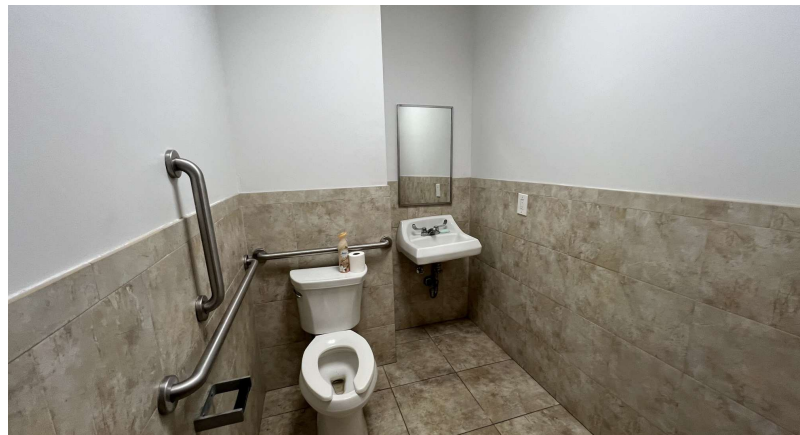
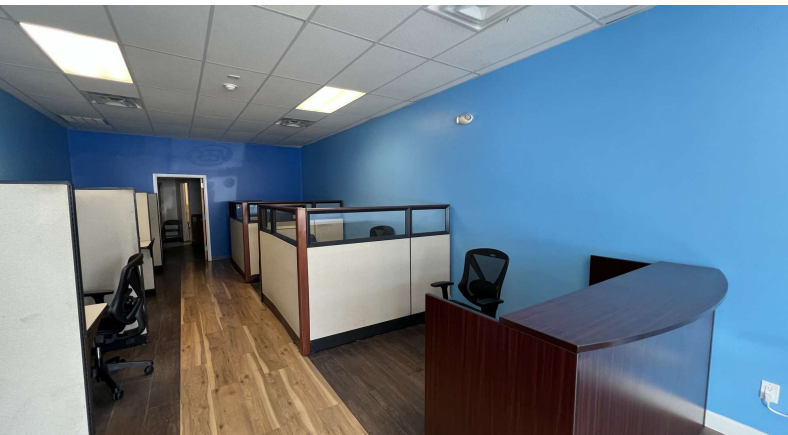
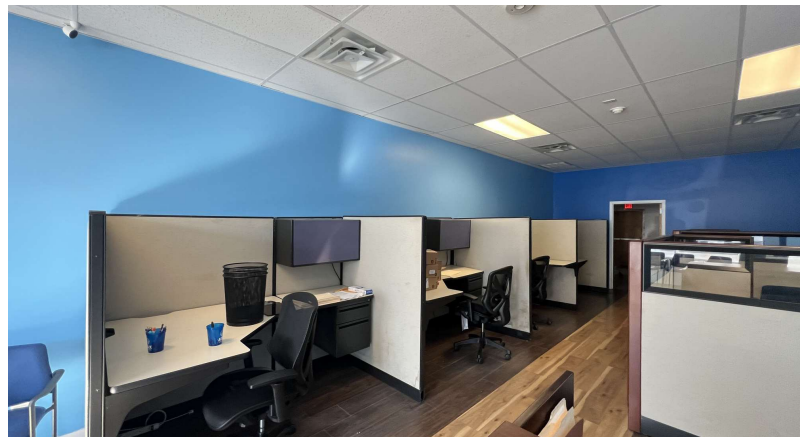
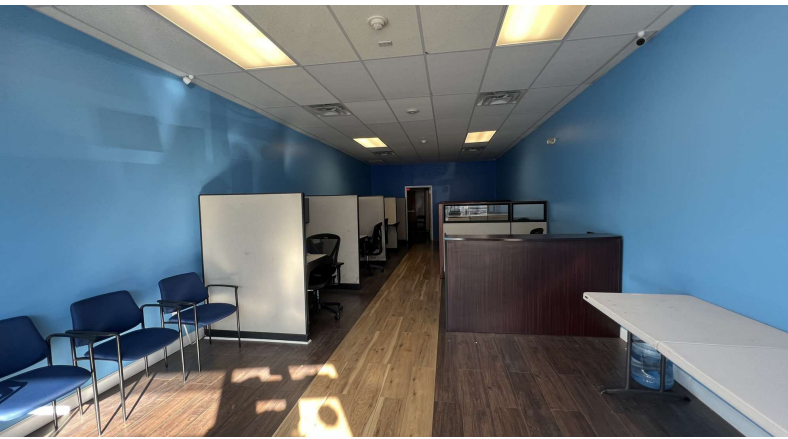
[WWW.ELLIMANCOMMERCIAL.COM](http://WWW.ELLIMANCOMMERCIAL.COM)

THE PROPERTY CONTAINED WITHIN THIS DOCUMENT IS BEING EXCLUSIVELY REPRESENTED BY DOUGLAS ELLIMAN REAL ESTATE COMMERCIAL DIVISION, 550 SMITHTOWN BYPASS STE. 117 SMITHTOWN, NY 11787 631.858.2405 © 2023 DOUGLAS ELLIMAN COMMERCIAL OF LI, LLC. ALL MATERIAL PRESENTED HEREIN IS INTENDED FOR INFORMATION PURPOSES ONLY. WHILE THIS INFORMATION IS BELIEVED TO BE CORRECT, IT IS REPRESENTED SUBJECT TO ERRORS, OMISSIONS, CHANGES OR WITHDRAWAL WITHOUT NOTICE. ALL PROPERTY INFORMATION, INCLUDING, BUT NOT LIMITED TO SQUARE FOOTAGE, ROOM COUNT, ZONING IN THE LISTING SHOULD BE VERIFIED BY YOUR OWN ATTORNEY, ARCHITECT OR ZONING EXPERT. IF YOUR PROPERTY IS CURRENTLY LISTED WITH ANOTHER REAL ESTATE BROKER, PLEASE DISREGARD THIS OFFER. IT IS NOT OUR INTENTION TO SOLICIT THE OFFERINGS OF OTHER REAL ESTATE BROKERS. WE COOPERATE WITH THEM FULLY. EQUAL HOUSING OPPORTUNITY.



# Retail Property For Lease

## 474 Hempstead Turnpike Elmont, NY 11003



For More Information:

**Christopher Pesce**



Associate Broker  
Douglas Elliman Commercial - Long Island  
631.858.2470  
christopher.pesce@elliman.com

**Kenneth Hester**



Licensed Real Estate Salesperson  
Douglas Elliman Commercial - Long Island  
516.641.0342  
kenneth.hester@elliman.com

**Douglas Elliman**  
Commercial



[WWW.ELLIMANCOMMERCIAL.COM](http://WWW.ELLIMANCOMMERCIAL.COM)

THE PROPERTY CONTAINED WITHIN THIS DOCUMENT IS BEING EXCLUSIVELY REPRESENTED BY DOUGLAS ELLIMAN REAL ESTATE COMMERCIAL DIVISION, 550 SMITHTOWN BYPASS STE. 117 SMITH-TOWN, NY 11787 631.858.2405 © 2023 DOUGLAS ELLIMAN COMMERCIAL OF LI, L.L.C. ALL MATERIAL PRESENTED HEREIN IS INTENDED FOR INFORMATION PURPOSES ONLY. WHILE THIS INFORMATION IS BELIEVED TO BE CORRECT, IT IS REPRESENTED SUBJECT TO ERRORS, OMISSIONS, CHANGES OR WITHDRAWAL WITHOUT NOTICE. ALL PROPERTY INFORMATION, INCLUDING, BUT NOT LIMITED TO SQUARE FOOTAGE, ROOM COUNT, ZONING IN THE LISTING SHOULD BE VERIFIED BY YOUR OWN ATTORNEY, ARCHITECT OR ZONING EXPERT. IF YOUR PROPERTY IS CURRENTLY LISTED WITH ANOTHER REAL ESTATE BROKER, PLEASE DISREGARD THIS OFFER. IT IS NOT OUR INTENTION TO SOLICIT THE OFFERINGS OF OTHER REAL ESTATE BROKERS. WE COOPERATE WITH THEM FULLY. EQUAL HOUSING OPPORTUNITY.



# Retail Property For Lease

## 474 Hempstead Turnpike Elmont, NY 11003



Map data ©2025 Imagery ©2025 Airbus, Maxar Technologies

For More Information:



**Christopher Pesce**

Associate Broker  
Douglas Elliman Commercial - Long Island  
631.858.2470  
christopher.pesce@elliman.com



**Kenneth Hester**

Licensed Real Estate Salesperson  
Douglas Elliman Commercial - Long Island  
516.641.0342  
kenneth.hester@elliman.com

 **Douglas Elliman**  
Commercial



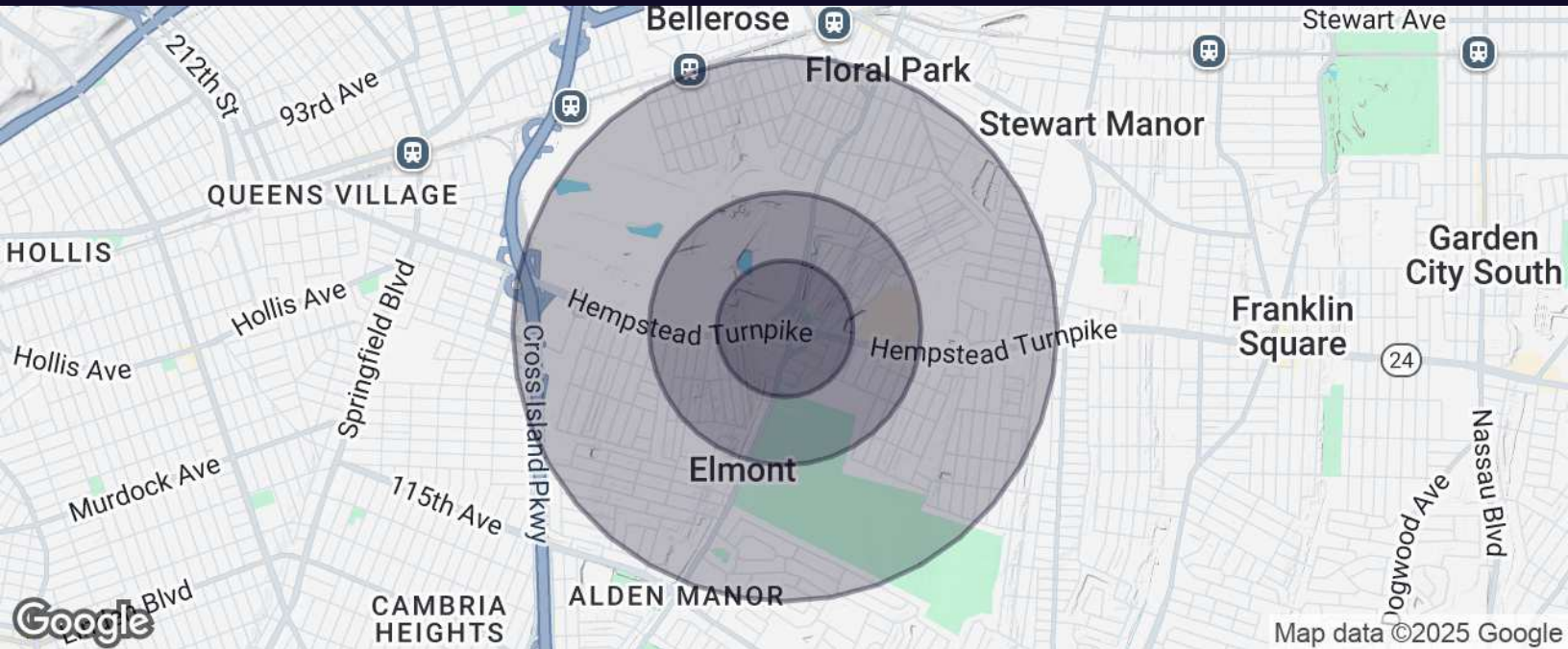
[WWW.ELLIMANCOMMERCIAL.COM](http://WWW.ELLIMANCOMMERCIAL.COM)

THE PROPERTY CONTAINED WITHIN THIS DOCUMENT IS BEING EXCLUSIVELY REPRESENTED BY DOUGLAS ELLIMAN REAL ESTATE COMMERCIAL DIVISION, 550 SMITHTOWN BYPASS STE. 117 SMITHTOWN, NY 11787 631.858.2405 © 2023 DOUGLAS ELLIMAN COMMERCIAL OF LI, L.L.C. ALL MATERIAL PRESENTED HEREIN IS INTENDED FOR INFORMATION PURPOSES ONLY. WHILE THIS INFORMATION IS BELIEVED TO BE CORRECT, IT IS REPRESENTED SUBJECT TO ERRORS, OMISSIONS, CHANGES OR WITHDRAWAL WITHOUT NOTICE. ALL PROPERTY INFORMATION, INCLUDING, BUT NOT LIMITED TO SQUARE FOOTAGE, ROOM COUNT, ZONING IN THE LISTING SHOULD BE VERIFIED BY YOUR OWN ATTORNEY, ARCHITECT OR ZONING EXPERT. IF YOUR PROPERTY IS CURRENTLY LISTED WITH ANOTHER REAL ESTATE BROKER, PLEASE DISREGARD THIS OFFER. IT IS NOT OUR INTENTION TO SOLICIT THE OFFERINGS OF OTHER REAL ESTATE BROKERS. WE COOPERATE WITH THEM FULLY. EQUAL HOUSING OPPORTUNITY.



# Retail Property For Lease

## 474 Hempstead Turnpike Elmont, NY 11003



Population	0.25 Miles	0.5 Miles	1 Mile
Total Population	1,941	7,034	33,381
Average Age	33.7	37.1	39.9
Average Age (Male)	33.3	34.8	36.9
Average Age (Female)	34.2	39.6	42.4

Households & Income	0.25 Miles	0.5 Miles	1 Mile
Total Households	518	1,994	9,766
# of Persons per HH	3.7	3.5	3.4
Average HH Income	\$126,303	\$120,067	\$131,851
Average House Value	\$455,844	\$453,188	\$511,051

For More Information:



**Christopher Pesce**

Associate Broker  
Douglas Elliman Commercial - Long Island  
631.858.2470  
christopher.pesce@elliman.com



**Kenneth Hester**

Licensed Real Estate Salesperson  
Douglas Elliman Commercial - Long Island  
516.641.0342  
kenneth.hester@elliman.com

Douglas Elliman  
Commercial



[WWW.ELLIMANCOMMERCIAL.COM](http://WWW.ELLIMANCOMMERCIAL.COM)

THE PROPERTY CONTAINED WITHIN THIS DOCUMENT IS BEING EXCLUSIVELY REPRESENTED BY DOUGLAS ELLIMAN REAL ESTATE COMMERCIAL DIVISION, 550 SMITHTOWN BYPASS STE. 117 SMITHTOWN, NY 11787 631.858.2405 © 2023 DOUGLAS ELLIMAN COMMERCIAL OF LI, LLC. ALL MATERIAL PRESENTED HEREIN IS INTENDED FOR INFORMATION PURPOSES ONLY. WHILE THIS INFORMATION IS BELIEVED TO BE CORRECT, IT IS REPRESENTED SUBJECT TO ERRORS, OMISSIONS, CHANGES OR WITHDRAWAL WITHOUT NOTICE. ALL PROPERTY INFORMATION, INCLUDING, BUT NOT LIMITED TO SQUARE FOOTAGE, ROOM COUNT, ZONING IN THE LISTING SHOULD BE VERIFIED BY YOUR OWN ATTORNEY, ARCHITECT OR ZONING EXPERT. IF YOUR PROPERTY IS CURRENTLY LISTED WITH ANOTHER REAL ESTATE BROKER, PLEASE DISREGARD THIS OFFER. IT IS NOT OUR INTENTION TO SOLICIT THE OFFERINGS OF OTHER REAL ESTATE BROKERS. WE COOPERATE WITH THEM FULLY. EQUAL HOUSING OPPORTUNITY.



## WE ARE COMMERCIAL REAL ESTATE

Commercial real estate involves more than just property listings. To get the most effective results, you need to partner with a company that has a full complement of services and an in-depth team of professionals to help with all of your needs. Douglas Elliman's team of commercial real estate experts is committed to unrivaled performance standards when working with tenants, investors, purchasers and owners. We represent all major property types including office, industrial, retail, apartment and land. We treat each assignment with commitment and focus, from a single transaction in a local market to national and multi-market assignments. We help negotiate contracts, coordinate construction and provide both property management as well as ongoing advisory service to satisfy your changing real estate needs. Our breadth of market knowledge, unprecedented network and use of innovative technology extend to all types of property transactions.

For More Information:



**Christopher Pesce**

Associate Broker  
631.858.2470  
christopher.pesce@elliman.com



**Kenneth Hester**

Licensed Real Estate Salesperson  
516.641.0342  
kenneth.hester@elliman.com

Office: 631.858.2405  
Fax: 631.543.0851  
550 Smithtown Bypass  
Smithtown, NY 11787