

FOR LEASE > OFFICE SPACE

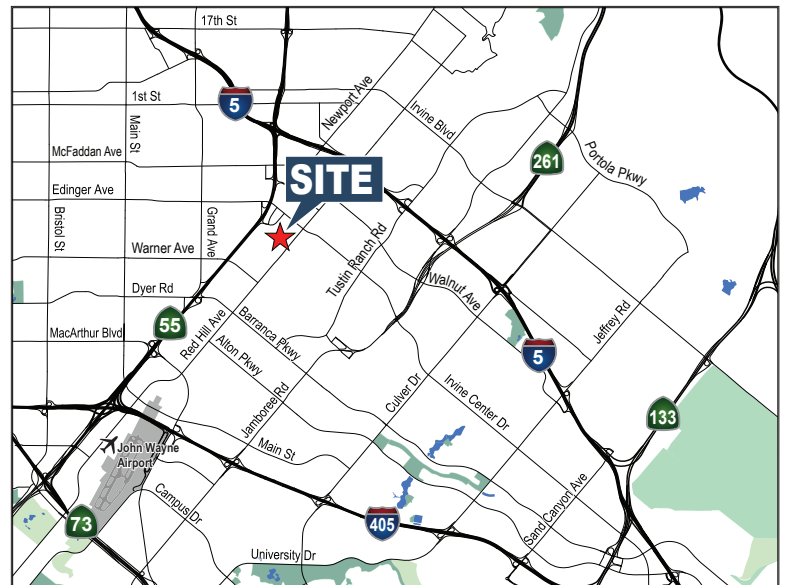
1371 Santa Fe

TUSTIN, CALIFORNIA



BUILDING FEATURES

- > ±2,533 SF Office Space Available
- > Office Space Renovated in 2009
- > Excellent Access to Costa Mesa (55) and Santa Ana (5) Freeways
- > Fully Sprinklered
- > Retail Amenities Within Walking Distance

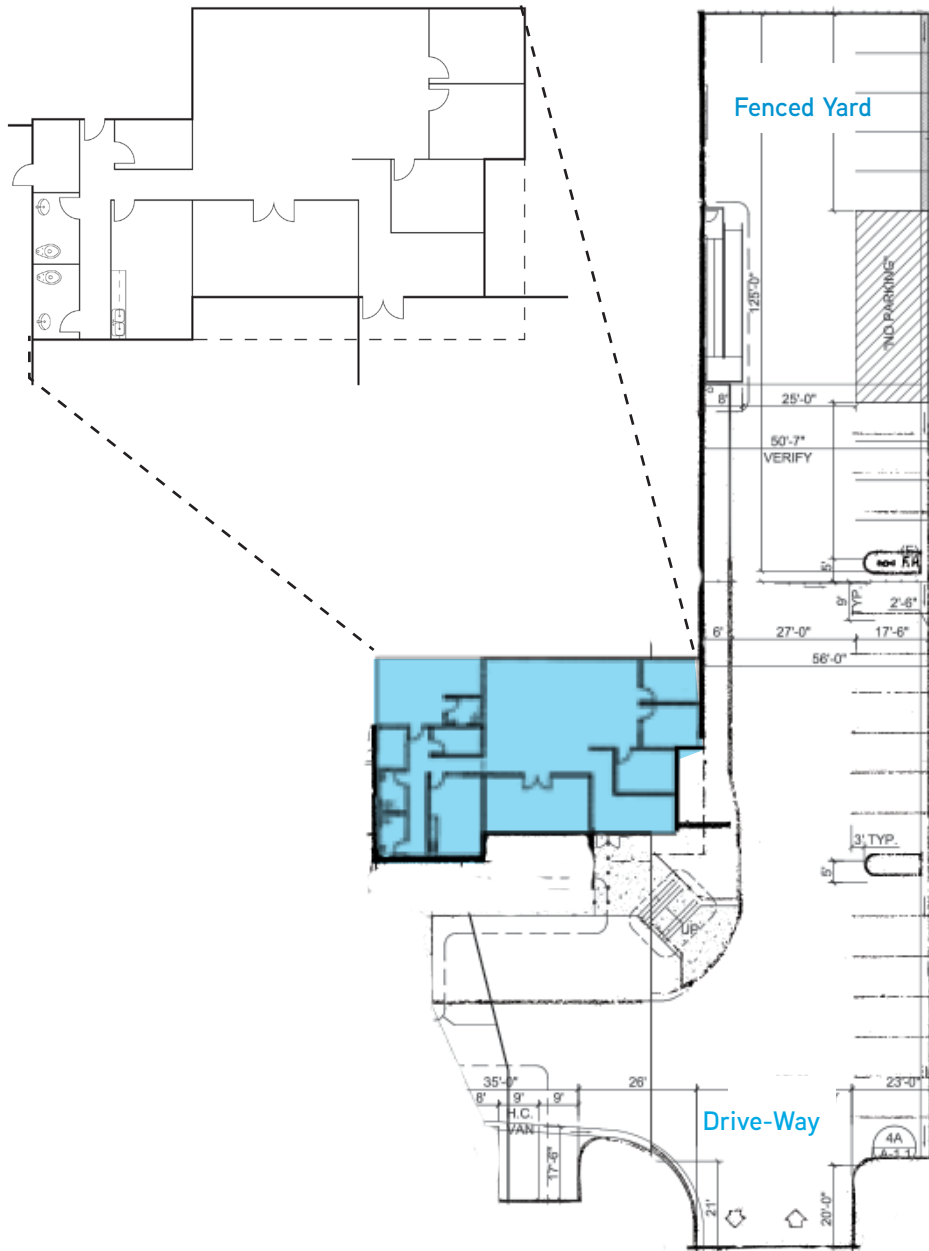


MICHAEL HARTEL
SR. EXECUTIVE VICE PRESIDENT
LICENSE NO. 01031013
949 724 5700
michael.hartel@colliers.com

NICK VELASQUEZ
SR. VICE PRESIDENT
LICENSE NO. 01946515
949 724 5707
nick.velasquez@colliers.com

COLLIERS INTERNATIONAL
3 Park Plaza, Suite 1200
Irvine, CA 92614
www.colliers.com

1371 SANTA FE > SITE & FLOOR PLAN



Contact Us

MICHAEL HARTEL
SR. EXECUTIVE VICE PRESIDENT
LICENSE NO. 01031013
949 724 5700
michael.hartel@colliers.com

NICK VELASQUEZ
SR. VICE PRESIDENT
LICENSE NO. 01946515
949 724 5707
nick.velasquez@colliers.com

COLLIERS INTERNATIONAL
3 Park Plaza, Suite 1200
Irvine, CA 92614
www.colliers.com