

# Industrial Condo For Sale

8,000 SF  
Manufacturing  
Distribution Space



## 1715 Cortland Court, Unit 4 Addison, Illinois

### PROPERTY HIGHLIGHTS

- 0.8 miles from North Avenue and I-355 Expressway full interchange
- 4.8 miles away from I-290 Expressway
- Easy access to transportation terminals and 30 minutes to O'Hare International Airport
- Recent renovations include windows, parking lot and HVAC
- Sale Price: Subject to Offer



8,000 SF  
INDUSTRIAL CONDO



1 DOCK



1 DRIVE-IN DOOR



2,434 SF OFFICE



18' CEILING  
HEIGHT



17 MILES TO O'HARE  
INTERNATIONAL AIRPORT

### Contact

John Basile

+1 630 693 0641

[jbasile@hiffman.com](mailto:jbasile@hiffman.com)

Jack Pappas

+1 630 317 0775

[jpappas@hiffman.com](mailto:jpappas@hiffman.com)

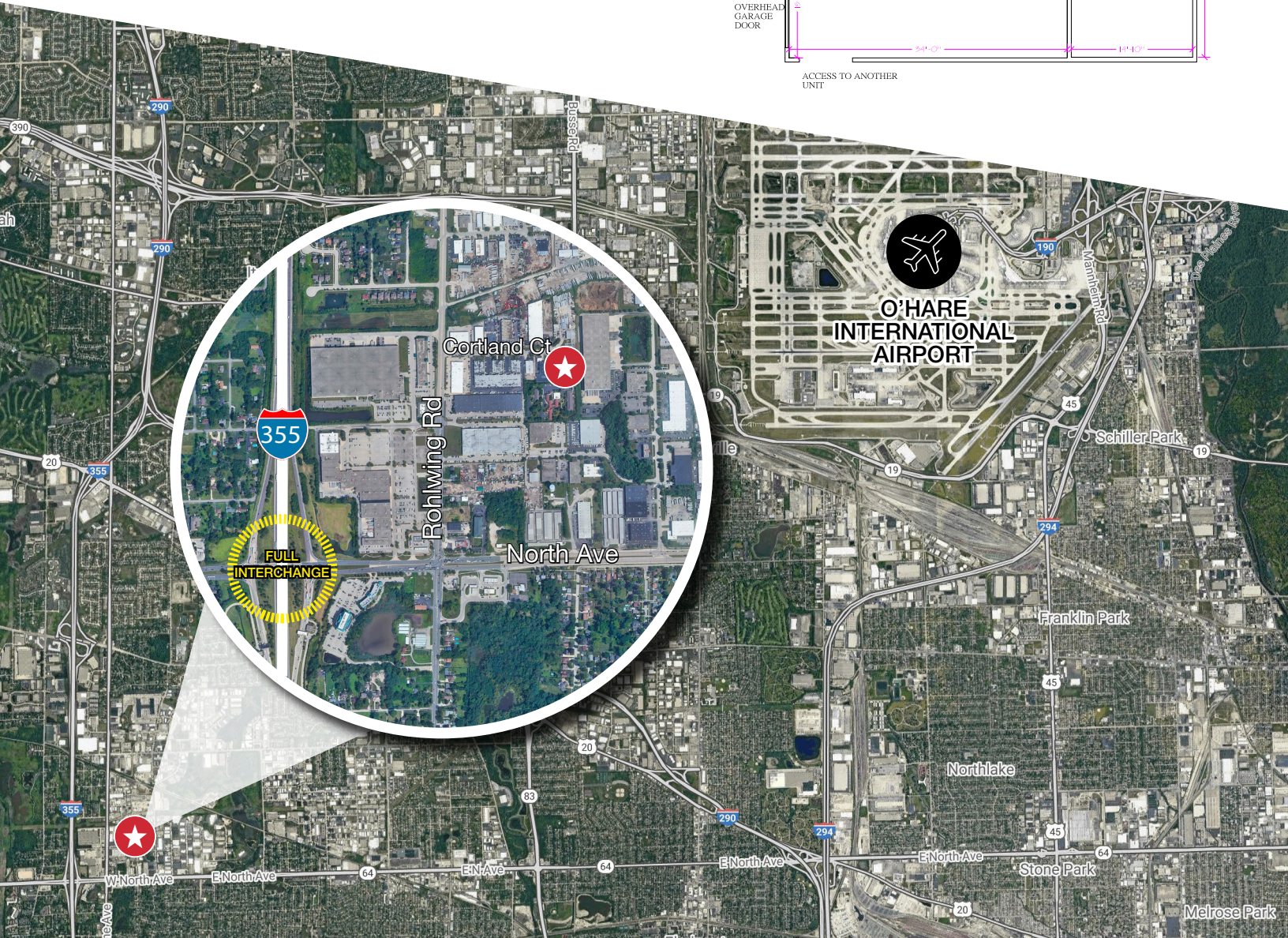
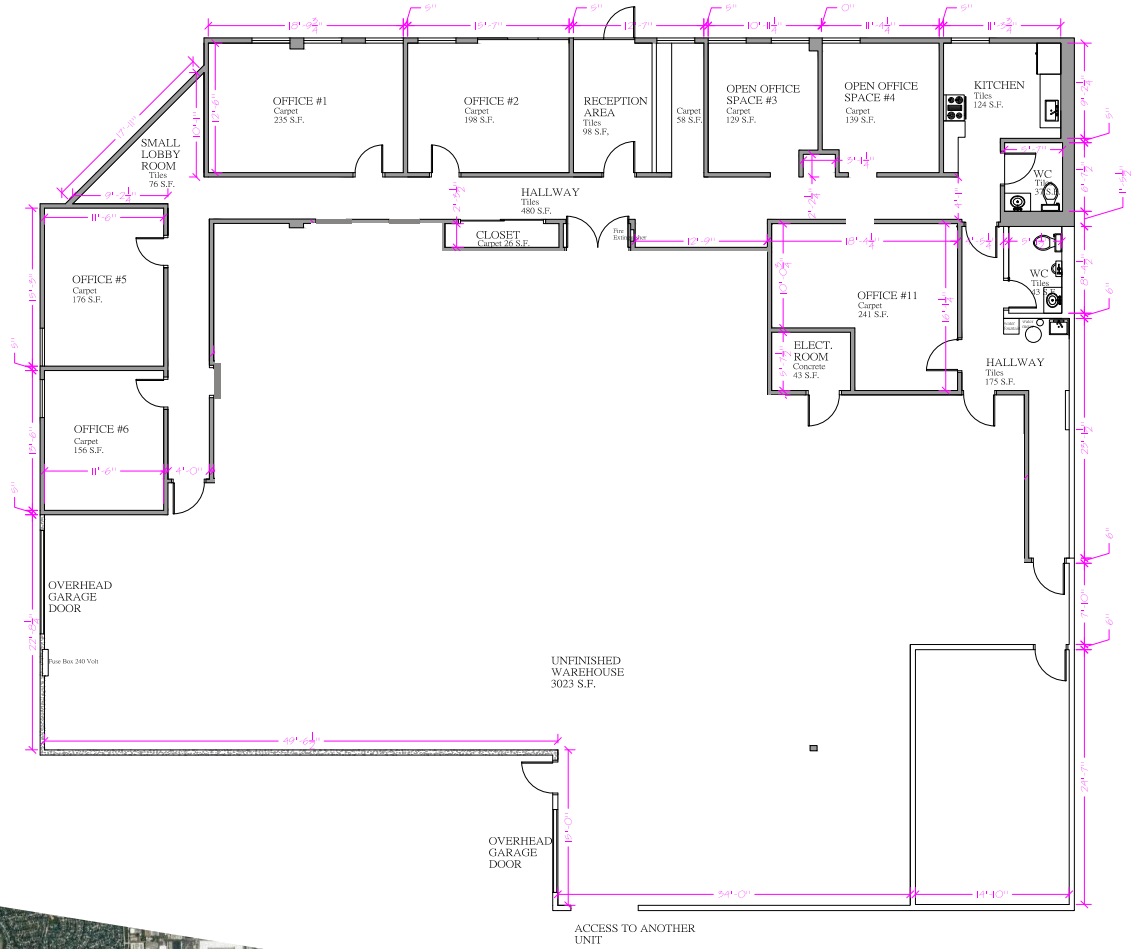
One Oakbrook Terrace  
Suite 400  
Oakbrook Terrace, Illinois 60181  
+1 630 932 1234

[hiffman.com](http://hiffman.com)

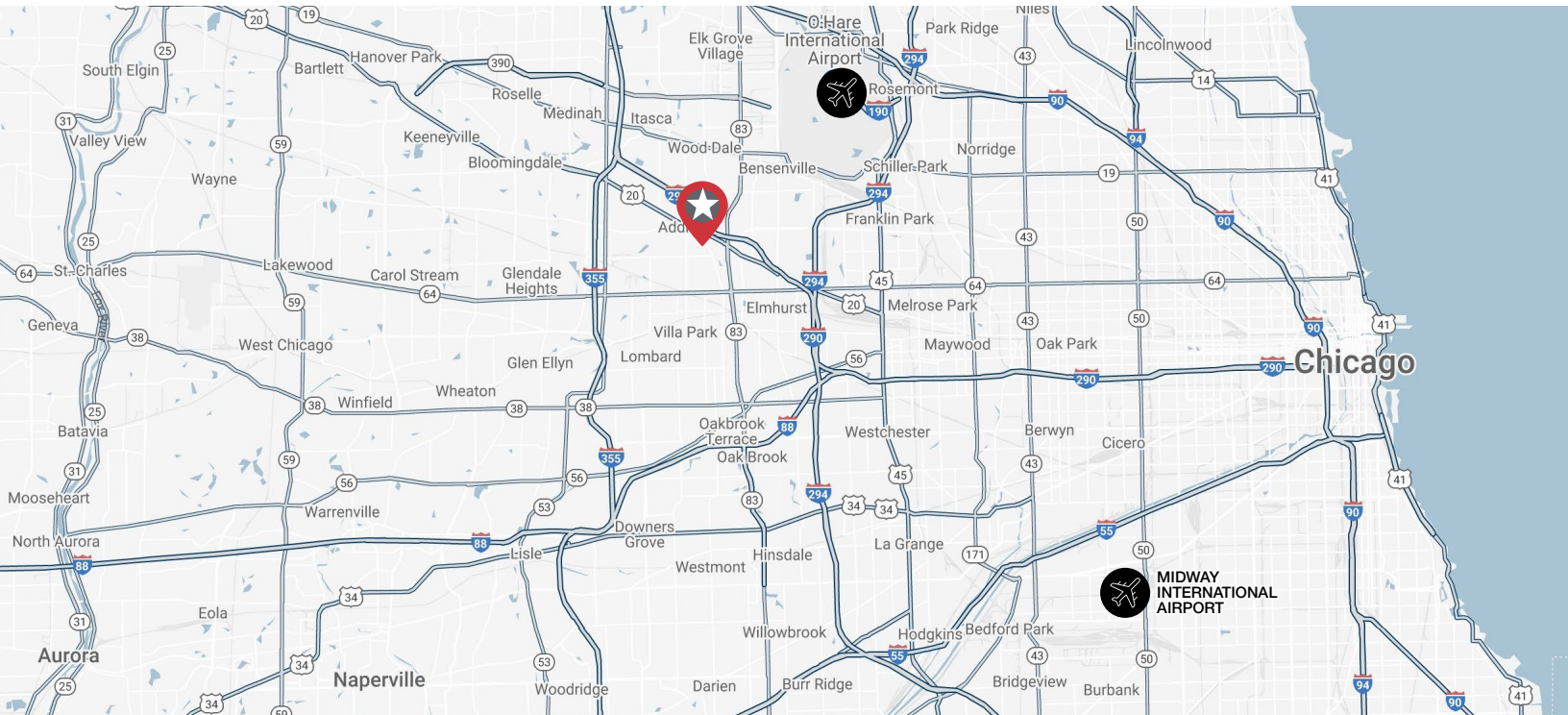
NO WARRANTY OR REPRESENTATION, EXPRESS OR IMPLIED, IS MADE AS TO THE ACCURACY OF THE INFORMATION CONTAINED HEREIN, AND THE SAME IS SUBMITTED SUBJECT TO ERRORS, OMISSIONS, CHANGE OF PRICE, RENTAL OR OTHER CONDITIONS, PRIOR SALE, LEASE OR FINANCING, OR WITHDRAWAL WITHOUT NOTICE, AND OF ANY SPECIAL LISTING CONDITIONS IMPOSED BY OUR PRINCIPALS NO WARRANTIES OR REPRESENTATIONS ARE MADE AS TO THE CONDITION OF THE PROPERTY OR ANY HAZARDS CONTAINED THEREIN ARE ANY TO BE IMPLIED.

NAI HIFFMAN | HIFFMAN NATIONAL | 2022

**NAI Hiffman**  
Commercial Real Estate Services, Worldwide







SCHEDULE A TOUR TODAY!

One Oakbrook Terrace  
Suite 400  
Oakbrook Terrace, Illinois 60181  
+1 630 932 1234