



FOR LEASE | OFFICE

THE VINEYARD OFFICE BUILDING

7806 E 108th St S, Tulsa, OK 74133



LEASE OVERVIEW

AVAILABLE SF:	739 - 1,686 SF
LEASE RATE:	\$21.00 SF/Yr [Full Service]
BUILDING SIZE:	6,428 SF
BUILDING CLASS:	A
CEILING HEIGHT:	10.0 FT
YEAR BUILT:	2017
ZONING:	OL
MARKET:	South Tulsa
CROSS STREETS:	108th And Memorial

PROPERTY DESCRIPTION

Suites or single offices available

Offered at \$21.00 PSF

Single Offices start at \$650 Per Month

Twelve Month Leases on single offices

Full Service

New Construction

Just South of Lifetime Fitness

Quality Construction



SUSAN DAVIS
Senior Advisor
918.924.6199
sdavis@svn.com
OK #024512

All SVN® Offices Independently Owned & Operated.
The information listed above has been obtained from sources we believe to be reliable, however, we accept no responsibility for its correctness.

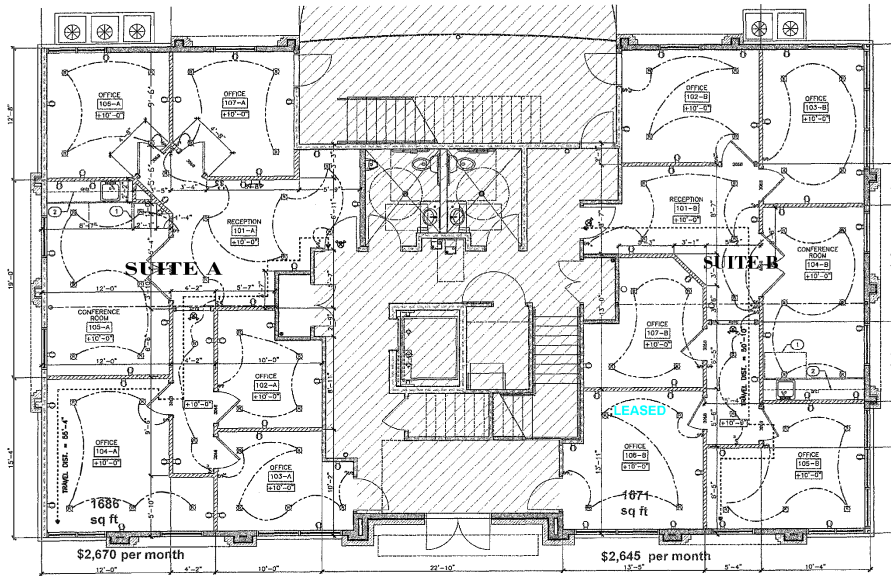
svnoakrealty.com



FOR LEASE | OFFICE

THE VINEYARD OFFICE BUILDING

7806 E 108th St S, Tulsa, OK 74133



1 FIRST FLOOR PLAN - SUITES A & B



SUSAN DAVIS

Senior Advisor
918.924.6199
sdavis@svn.com
OK #024512

All SVN® Offices Independently Owned & Operated.
The information listed above has been obtained from sources we believe to be reliable, however, we accept no responsibility for its correctness.

svnoakrealty.com