

## FURNISHED BRIGHT CORNER OFFICE SPACE

1,379 RSF



915 BROADWAY

BETWEEN THE PARKS

Southwest Corner of 21st Street & Broadway




*Furniture shown for layout concept only*

ABS Partners Real Estate, as the exclusive agent is pleased to offer the following opportunity for lease:

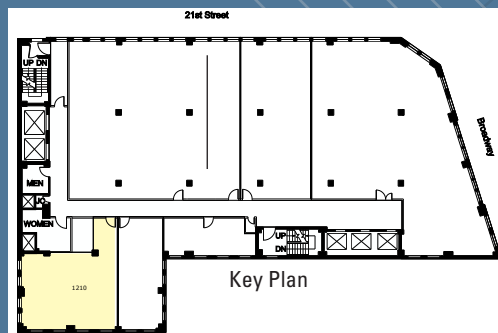
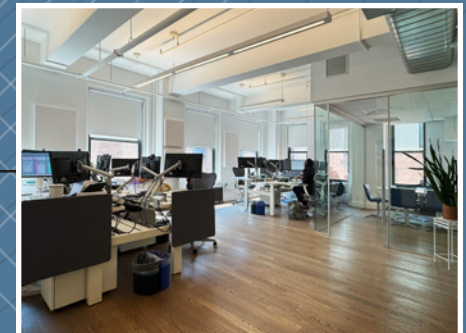
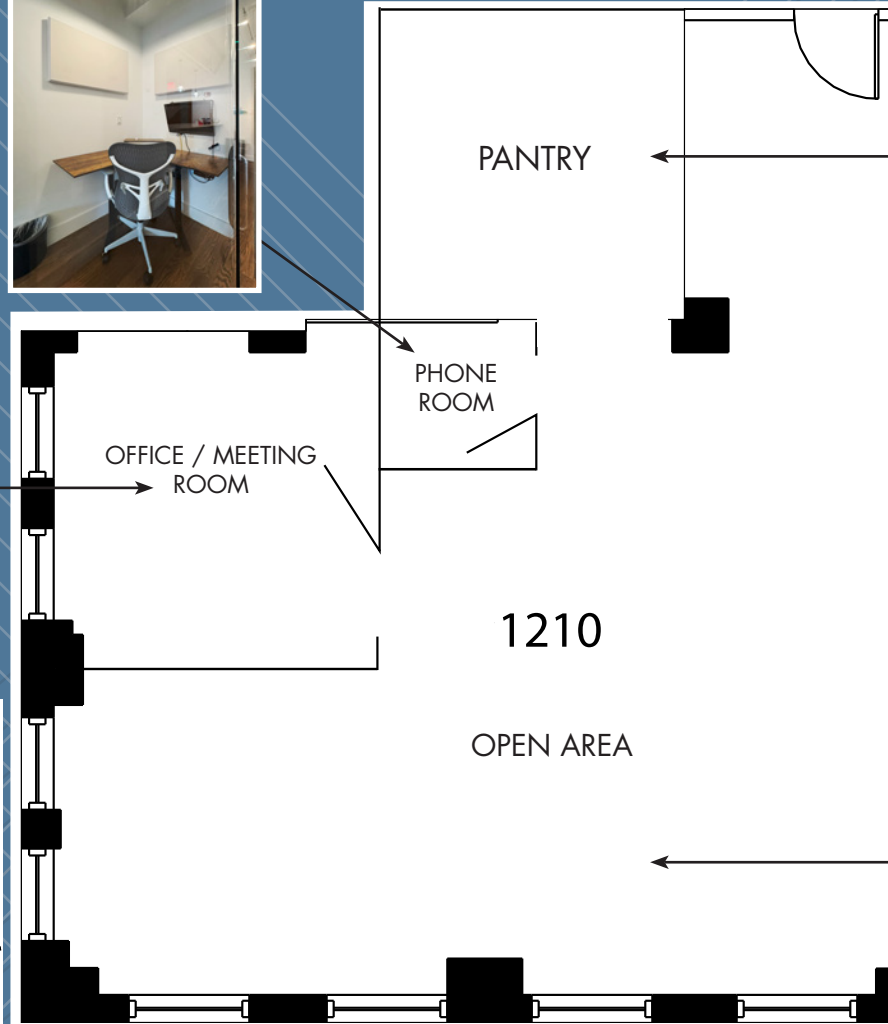
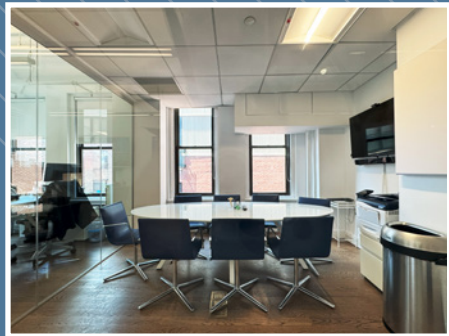
- Suite 1210: 1,379 rsf
- Furnished corner space with hardwood floors throughout and exposed ceiling
  - (1) Office/meeting room, wet pantry with bar-height seating counter, and open area
  - 2-sides of windows provide abundant natural light and south and west exposures

Possession: July 1, 2026  
Rent: Call or email for info

- High speed fiber on each floor connected to a redundant fiber loop below the building
- Direct access to the Union Square transportation hub **4 5 6 L N Q R W** express and local subway lines; and close proximity to NJ  station at 23rd St/6th Ave
- Centrally located between Union Square and Madison Square Park, the area offering a wide variety of services, retail, and dining options



SUITE 1210 - 1,379 RSF  
(AS-BUILT PLAN)



*(Floor plan for descriptive purposes only; not to scale. Furniture shown for layout concept only)*



# Walk, Bike, Drive or Ride to Work & Play

Dine: ABC Kitchen, Barn Joo, Eataly, Gramercy Tavern, Novita, Merakia, Union Square Cafe, Whole Foods

Shop: Athleta, Design Within Reach, Jacadi, Nike, Saatva, Arc'teryx, Nordstrom Rack, Untuckit

Enjoy: The Parks, Union Square Farmers Market, Festivals, Soulcycle, Equinox, Uplift Studios

Neighbors: BuzzFeed, Dropbox, Facebook, IBM Resources, Mastercard, NYU, Santander, The Flatiron Building, W Hotel





For further information and/or inspection, please contact Exclusive Broker

**Ben Waller**  
 Partner, Licensed Associate Real Estate Broker  
 212.400.9515  
 bwaller@absre.com

**Zoe Snow**  
 Associate, Licensed Real Estate Salesperson  
 646.439.2000  
 zsnow@absre.com

**Daria Ghasemi**  
 Associate, Licensed Real Estate Salesperson  
 646.439.2002  
 dghasemi@absre.com

